

| Índices de Productividad Laboral y Costo Unitario de la Mano de Obra en Establecimientos de las Industrias Manufactureras |   |                  |                  |                               |                                    |                  |   |                  |                                   |               |
|---|---|------------------|------------------|-------------------------------|------------------------------------|------------------|---|------------------|-----------------------------------|---------------|
| Periodo   | Índices trimestrales<br>(Base 2013=100) |                  |                  |                               |                                    |                  |   |                  |                                   |               |
|   | Volúmen de la producción                | Personal ocupado | Horas trabajadas | Remuneraciones reales totales | Productividad laboral con base en: |                  | Remuneraciones medias reales con base en: |                  | Costo unitario de la mano de obra |               |
|   |   |                  |                  |                               | Personal ocupado                   | Horas trabajadas | Personal ocupado                          | Horas trabajadas |                                   |               |
|   |   |                  |                  |                               | E = (A÷B)*100                      | F = (A÷C)*100    | G = (D÷B)*100                             | H = (D÷C)*100    |                                   | I = (H÷F)*100 |
| (A)   | (B)                                     | (C)              | (D)              | E = (A÷B)*100                 | F = (A÷C)*100                      | G = (D÷B)*100    | H = (D÷C)*100                             | I = (H÷F)*100    |                                   |               |
| 2005  | I                                       | 83.4             | 95.3             | 93.6                          | 91.2                               | 87.5             | 89.1                                      | 95.7             | 97.4                              | 109.3         |
|   | II                                      | 88.1             | 96.3             | 97.7                          | 94.9                               | 91.5             | 90.2                                      | 98.5             | 97.1                              | 107.6         |
|   | III                                     | 87.8             | 96.5             | 98.3                          | 93.2                               | 91.0             | 89.3                                      | 96.6             | 94.8                              | 106.2         |
|   | IV                                      | 91.0             | 97.5             | 97.5                          | 103.3                              | 93.3             | 93.3                                      | 105.9            | 105.9                             | 113.5         |
| 2006  | I                                       | 90.3             | 98.9             | 98.4                          | 94.6                               | 91.3             | 91.8                                      | 95.7             | 96.1                              | 104.7         |
|   | II                                      | 93.2             | 100.7            | 100.4                         | 100.5                              | 92.6             | 92.8                                      | 99.8             | 100.1                             | 107.9         |
|   | III                                     | 91.3             | 101.3            | 102.7                         | 98.3                               | 90.1             | 88.9                                      | 97.0             | 95.7                              | 107.6         |
|   | IV                                      | 91.6             | 100.7            | 99.4                          | 106.5                              | 91.0             | 92.2                                      | 105.8            | 107.1                             | 116.2         |
| 2007  | I                                       | 91.9             | 99.7             | 98.4                          | 95.9                               | 92.2             | 93.4                                      | 96.2             | 97.5                              | 104.4         |
|   | II                                      | 94.2             | 99.7             | 99.0                          | 99.5                               | 94.5             | 95.2                                      | 99.8             | 100.5                             | 105.6         |
|   | III                                     | 94.0             | 100.0            | 100.9                         | 97.9                               | 94.0             | 93.2                                      | 97.9             | 97.0                              | 104.1         |
|   | IV                                      | 92.6             | 100.0            | 98.7                          | 106.5                              | 92.6             | 93.8                                      | 106.5            | 107.9                             | 115.0         |
| 2008  | I                                       | 91.6             | 100.4            | 98.5                          | 97.7                               | 91.2             | 93.0                                      | 97.3             | 99.2                              | 106.7         |
|   | II                                      | 94.8             | 99.8             | 100.5                         | 100.4                              | 95.0             | 94.3                                      | 100.6            | 99.9                              | 105.9         |
|   | III                                     | 91.3             | 98.7             | 99.9                          | 97.4                               | 92.5             | 91.4                                      | 98.7             | 97.5                              | 106.7         |
|   | IV                                      | 85.6             | 95.6             | 94.0                          | 102.5                              | 89.5             | 91.1                                      | 107.2            | 109.0                             | 119.6         |
| 2009  | I                                       | 77.4             | 91.1             | 87.7                          | 88.2                               | 85.0             | 88.3                                      | 96.8             | 100.6                             | 113.9         |
|   | II                                      | 78.8             | 89.0             | 87.0                          | 88.3                               | 88.5             | 90.6                                      | 99.2             | 101.5                             | 112.0         |
|   | III                                     | 82.4             | 89.1             | 90.1                          | 87.9                               | 92.5             | 91.5                                      | 98.7             | 97.6                              | 106.7         |
|   | IV                                      | 86.4             | 90.7             | 90.3                          | 96.6                               | 95.3             | 95.7                                      | 106.5            | 107.0                             | 111.8         |
| 2010  | I                                       | 86.2             | 90.5             | 89.2                          | 87.7                               | 95.2             | 96.6                                      | 96.9             | 98.3                              | 101.8         |
|   | II                                      | 90.6             | 92.8             | 93.3                          | 91.4                               | 97.6             | 97.1                                      | 98.5             | 98.0                              | 100.9         |
|   | III                                     | 90.8             | 94.5             | 96.7                          | 92.6                               | 96.1             | 93.9                                      | 98.0             | 95.8                              | 102.0         |
|   | IV                                      | 90.4             | 94.9             | 94.4                          | 99.3                               | 95.3             | 95.8                                      | 104.6            | 105.2                             | 109.8         |
| 2011  | I                                       | 92.1             | 94.9             | 94.4                          | 91.4                               | 97.0             | 97.6                                      | 96.3             | 96.8                              | 99.2          |
|   | II                                      | 94.4             | 96.1             | 96.3                          | 94.4                               | 98.2             | 98.0                                      | 98.2             | 98.0                              | 100.0         |
|   | III                                     | 94.7             | 96.3             | 98.2                          | 95.0                               | 98.3             | 96.4                                      | 98.7             | 96.7                              | 100.3         |
|   | IV                                      | 94.9             | 96.3             | 95.6                          | 102.0                              | 98.5             | 99.3                                      | 105.9            | 106.7                             | 107.5         |
| 2012  | I                                       | 98.5             | 96.6             | 97.3                          | 94.3                               | 102.0            | 101.2                                     | 97.6             | 96.9                              | 95.8          |
|   | II                                      | 99.2             | 98.1             | 98.6                          | 97.5                               | 101.1            | 100.6                                     | 99.4             | 98.9                              | 98.3          |
|   | III                                     | 99.4             | 98.6             | 100.4                         | 96.6                               | 100.8            | 99.0                                      | 98.0             | 96.2                              | 97.2          |
|   | IV                                      | 98.3             | 98.9             | 98.1                          | 103.4                              | 99.4             | 100.2                                     | 104.6            | 105.4                             | 105.2         |
| 2013  | I                                       | 97.4             | 98.5             | 96.5                          | 95.6                               | 98.9             | 100.9                                     | 97.1             | 99.1                              | 98.2          |
|   | II                                      | 102.6            | 100.1            | 101.1                         | 98.8                               | 102.5            | 101.5                                     | 98.7             | 97.7                              | 96.3          |
|   | III                                     | 100.6            | 100.7            | 102.4                         | 98.6                               | 99.9             | 98.2                                      | 97.9             | 96.3                              | 98.1          |
|   | IV                                      | 99.3             | 100.8            | 100.0                         | 107.0                              | 98.5             | 99.3                                      | 106.2            | 107.0                             | 107.8         |
| 2014  | I                                       | 101.0            | 101.1            | 99.9                          | 97.8                               | 99.9             | 101.1                                     | 96.7             | 97.9                              | 96.8          |
|   | II                                      | 105.2            | 102.6            | 102.2                         | 102.2                              | 102.5            | 102.9                                     | 99.6             | 100.0                             | 97.2          |
|   | III                                     | 103.9            | 103.3            | 104.6                         | 102.3                              | 100.6            | 99.3                                      | 99.0             | 97.8                              | 98.5          |
|   | IV                                      | 103.4            | 104.1            | 103.2                         | 110.6                              | 99.3             | 100.2                                     | 106.2            | 107.2                             | 107.0         |
| 2015  | I                                       | 102.8            | 104.0            | 102.0                         | 101.4                              | 98.8             | 100.8                                     | 97.5             | 99.4                              | 98.6          |
|   | II                                      | 105.5            | 105.4            | 104.9                         | 105.8                              | 100.1            | 100.6                                     | 100.4            | 100.9                             | 100.3         |
|   | III                                     | 105.2            | 106.0            | 107.3                         | 105.5                              | 99.2             | 98.0                                      | 99.5             | 98.3                              | 100.3         |
|   | IV                                      | 105.3            | 106.7            | 105.7                         | 115.4                              | 98.7             | 99.6                                      | 108.2            | 109.2                             | 109.6         |
| 2016  | I                                       | 103.7            | 106.9            | 105.0                         | 105.9                              | 97.0             | 98.8                                      | 99.1             | 100.9                             | 102.1         |
|   | II                                      | 106.9            | 108.2            | 109.1                         | 111.7                              | 98.8             | 98.0                                      | 103.2            | 102.4                             | 104.5         |
|   | III                                     | 105.2            | 109.2            | 110.7                         | 111.9                              | 96.3             | 95.0                                      | 102.5            | 101.1                             | 106.4         |
|   | IV                                      | 104.5            | 110.0            | 109.1                         | 120.7                              | 95.0             | 95.8                                      | 109.7            | 110.6                             | 115.4         |
| 2017  | I                                       | 107.5            | 110.5            | 110.1                         | 111.0                              | 97.3             | 97.6                                      | 100.5            | 100.8                             | 103.3         |
|   | II                                      | 108.8            | 112.0            | 112.2                         | 115.9                              | 97.1             | 97.0                                      | 103.5            | 103.3                             | 106.5         |
|   | III                                     | 106.4            | 113.2            | 115.0                         | 115.0                              | 94.0             | 92.5                                      | 101.6            | 100.0                             | 108.1         |
|   | IV                                      | 105.3            | 113.6            | 112.5                         | 124.7                              | 92.7             | 93.6                                      | 109.8            | 110.8                             | 118.4         |
| 2018  | I                                       | 105.1            | 113.8            | 111.9                         | 115.0                              | 92.4             | 93.9                                      | 101.1            | 102.8                             | 109.5         |
|   | II                                      | 110.9            | 115.3            | 116.4                         | 121.1                              | 96.2             | 95.3                                      | 105.0            | 104.0                             | 109.1         |
|   | III                                     | 109.2            | 115.8            | 117.9                         | 119.3                              | 94.3             | 92.6                                      | 103.0            | 101.2                             | 109.3         |
|   | IV                                      | 106.2            | 116.2            | 115.5                         | 129.1                              | 91.4             | 91.9                                      | 111.1            | 111.8                             | 121.7         |
| 2019  | I                                       | 106.3            | 116.3            | 114.4                         | 119.9                              | 91.4             | 92.9                                      | 103.1            | 104.8                             | 112.8         |
|   | II                                      | 109.7            | 116.8            | 116.3                         | 124.6                              | 93.9             | 94.3                                      | 106.7            | 107.1                             | 113.6         |
|   | III                                     | 109.3            | 116.3            | 118.2                         | 123.1                              | 94.0             | 92.5                                      | 105.8            | 104.1                             | 112.5         |
|   | IV                                      | 104.0            | 115.0            | 113.2                         | 131.9                              | 90.4             | 91.9                                      | 114.7            | 116.5                             | 126.8         |
| 2020  | I                                       | 104.1            | 114.2            | 111.9                         | 119.8                              | 91.2             | 93.0                                      | 104.9            | 107.1                             | 115.2         |
|   | II                                      | 76.7             | 111.1            | 89.6                          | 116.0                              | 69.0             | 85.6                                      | 104.4            | 129.5                             | 151.3         |
|   | III                                     | 102.1            | 111.8            | 110.7                         | 119.1                              | 91.3             | 92.2                                      | 106.5            | 107.6                             | 116.7         |
|   | IV                                      | 105.9            | 113.1            | 111.2                         | 133.6                              | 93.6             | 95.2                                      | 118.1            | 120.1                             | 126.2         |
| 2021  | I                                       | 106.4            | 114.0            | 110.6                         | 121.6                              | 93.3             | 96.2                                      | 106.7            | 109.9                             | 114.2         |
|   | II                                      | 107.4            | 115.2            | 113.2                         | 123.1                              | 93.2             | 94.9                                      | 106.9            | 108.7                             | 114.5         |
|   | III                                     | 107.2            | 116.3            | 116.8                         | 121.8                              | 92.2             | 91.8                                      | 104.7            | 104.3                             | 113.6         |
|   | IV                                      | 108.8            | 116.4            | 114.4                         | 133.2                              | 93.5             | 95.1                                      | 114.4            | 116.4                             | 122.4         |
| 2022  | I                                       | 112.6            | 117.0            | 114.7                         | 123.0                              | 96.2             | 98.2                                      | 105.1            | 107.2                             | 109.2         |
|   | II                                      |                  |                  |                               |                                    |                  |   |                  |                                   |               |
|   | III                                     |                  |                  |                               |                                    |                  |   |                  |                                   |               |
|   | IV                                      |                  |                  |                               |                                    |                  |   |                  |                                   |               |

Nota: Cifras preliminares a partir de 2021-III. Cifras revisadas a partir de 2021-I.

Fuente: INEGI, Encuesta Mensual de la Industria Manufacturera (EMIM).

 [Gráfica trimestral de productividad laboral con base en personal ocupado](#)

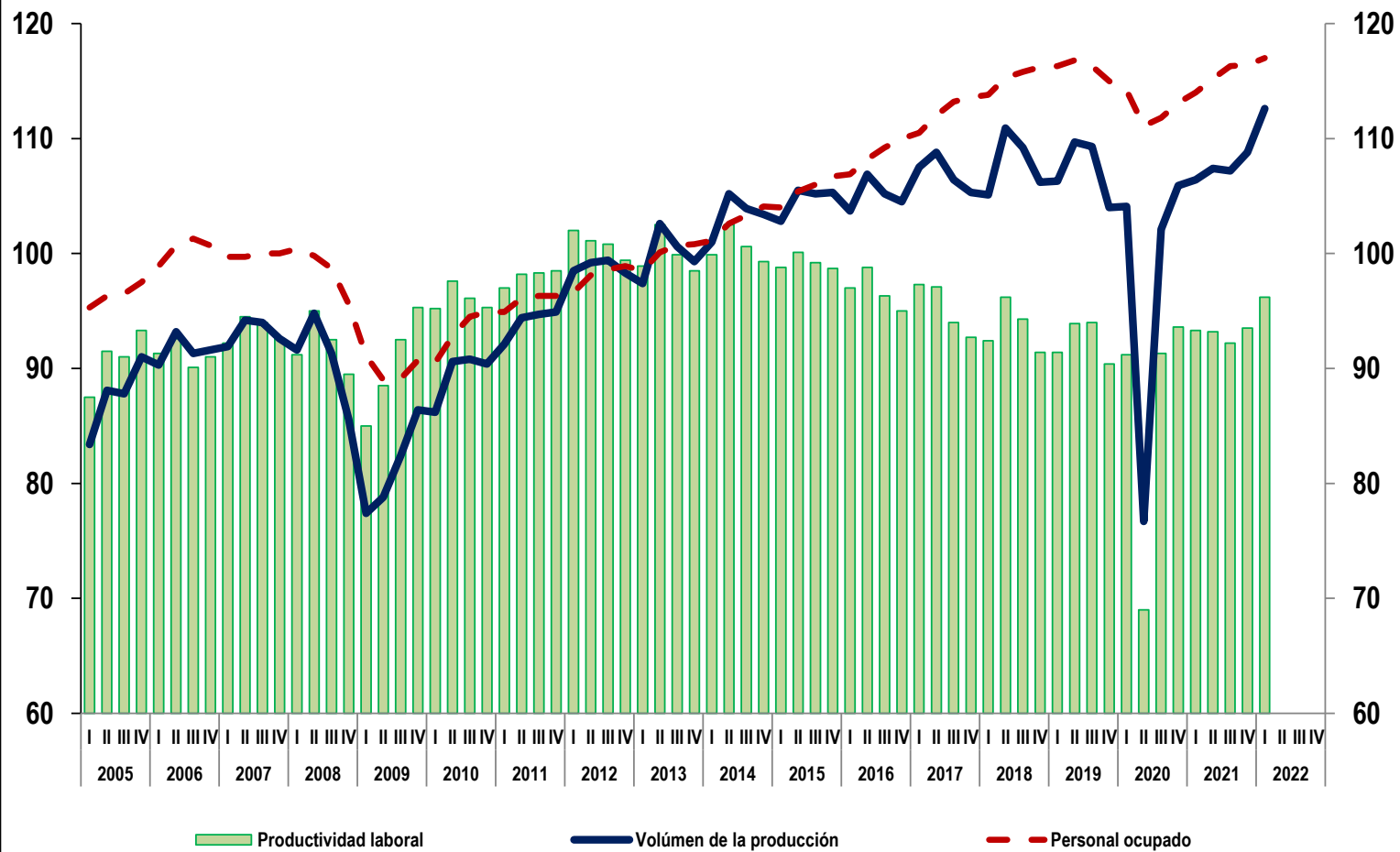
 [Gráfica trimestral de productividad laboral con base en horas trabajadas](#)

 [Gráfica trimestral de remuneraciones medias reales con base en personal ocupado](#)

 [Gráfica trimestral de remuneraciones medias reales con base en horas trabajadas](#)

 [Gráfica trimestral de costo unitario de la mano de obra](#)

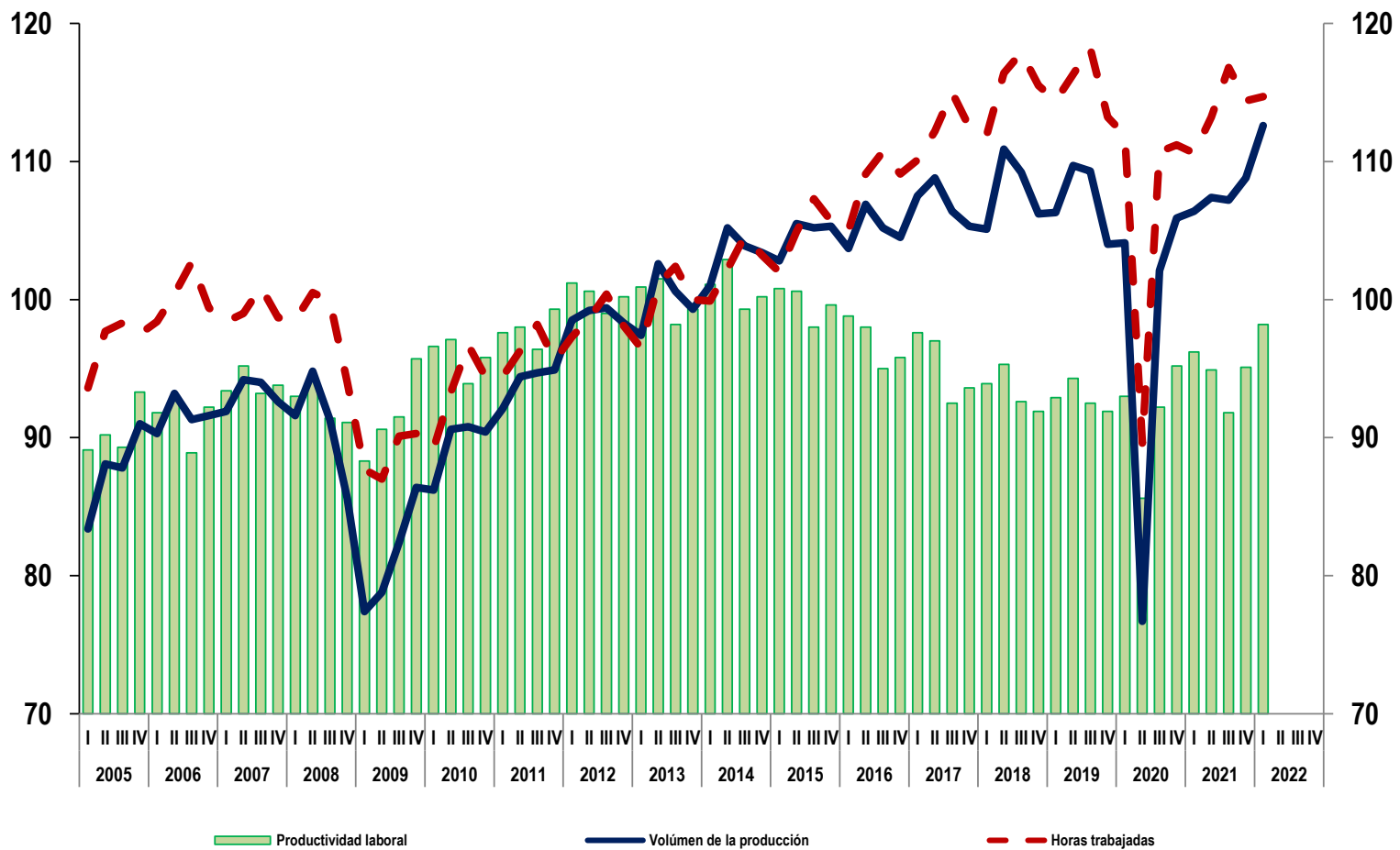
**Índice trimestral de productividad laboral de la industria manufacturera  
con base en el personal ocupado**  
Base 2013 = 100



**Nota:** Cifras preliminares a partir de 2021-III. Cifras revisadas a partir de 2021-I.  
**Fuente:** INEGI, Encuesta Mensual de la Industria Manufacturera (EMIM).

### Índice trimestral de productividad laboral de la industria manufacturera con base en horas trabajadas

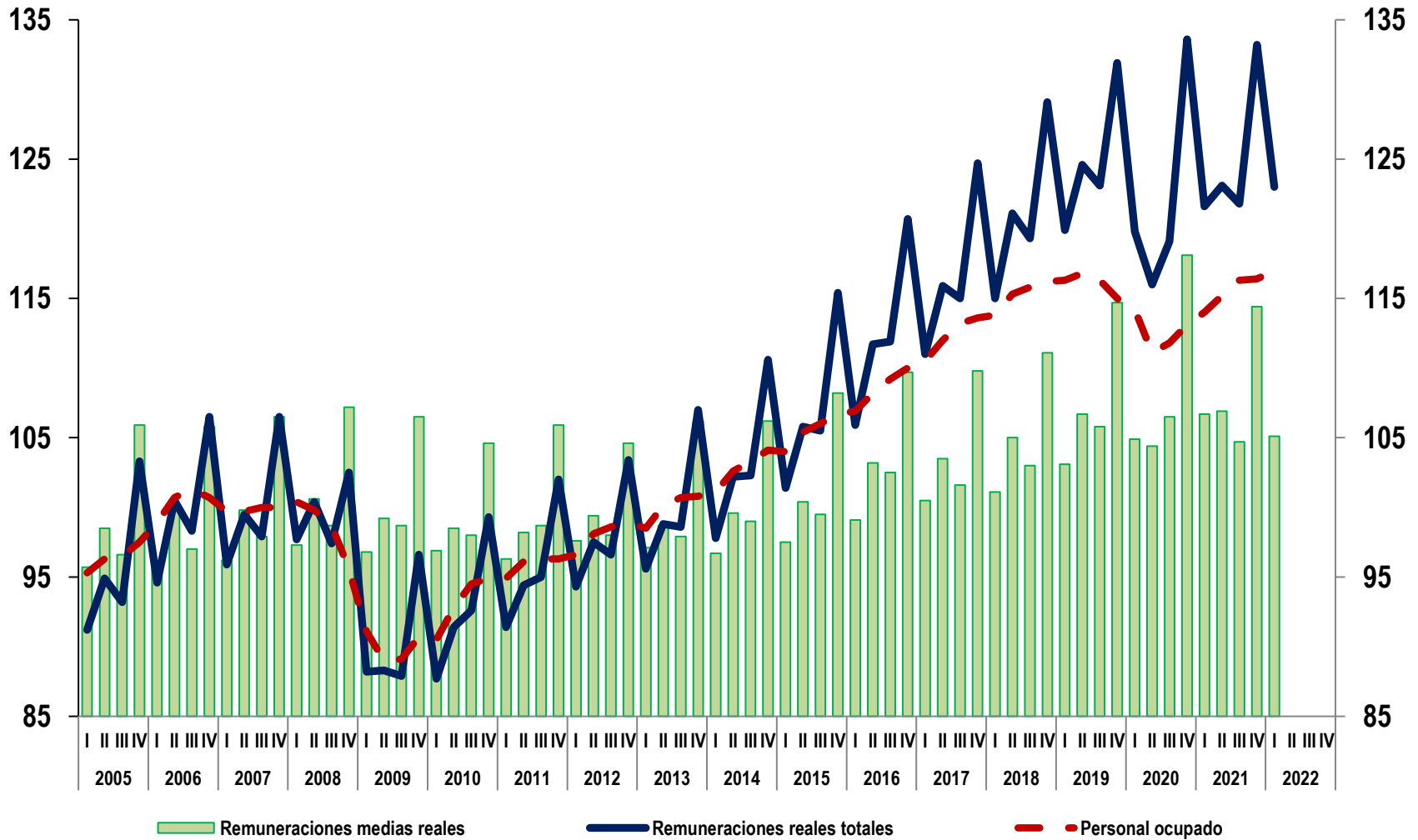
Base 2013 = 100



**Nota:** Cifras preliminares a partir de 2021 III. Cifras revisadas a partir de 2021 I  
Fuente: INEGI, Encuesta Mensual de la Industria Manufacturera (EMIM).

## Índice trimestral de las remuneraciones medias reales de la industria manufacturera con base en el personal ocupado

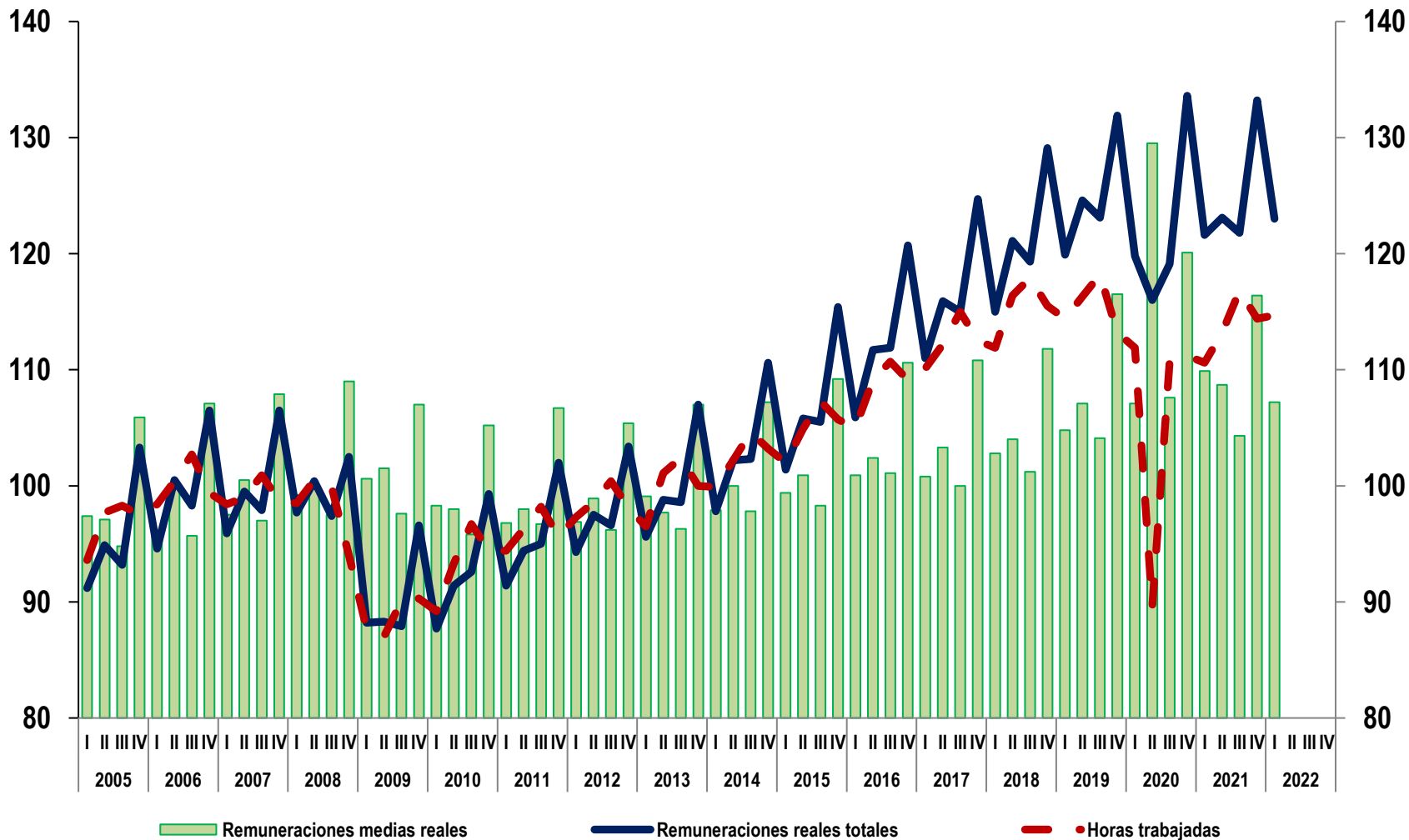
Base 2013 = 100



**Nota:** Cifras preliminares a partir de 2021 III. Cifras revisadas a partir de 2021 I  
 Fuente: INEGI, Encuesta Mensual de la Industria Manufacturera (EMIM).

## Índice trimestral de las remuneraciones medias reales de la industria manufacturera con base en horas trabajadas

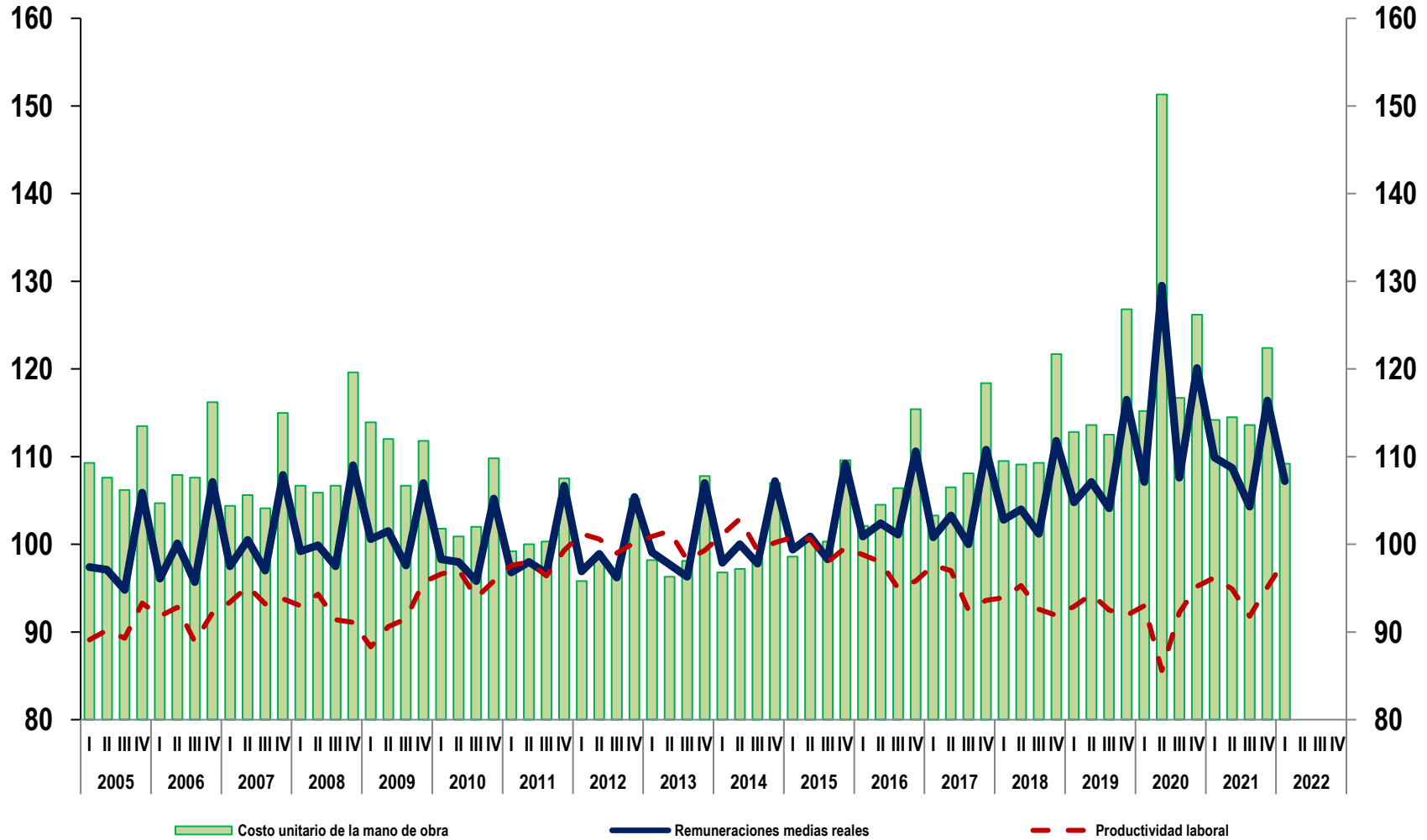
Base 2013 = 100



**Nota:** Cifras preliminares a partir de 2021 III. Cifras revisadas a partir de 2021 I  
Fuente: INEGI, Encuesta Mensual de la Industria Manufacturera (EMIM).

## Índice trimestral del costo unitario de la mano de obra de la industria manufacturera con base en horas trabajadas

Base 2013 = 100



**Nota:** Cifras preliminares a partir de 2021 III. Cifras revisadas a partir de 2021 I.

**Fuente:** INEGI, Encuesta Mensual de la Industria Manufacturera (EMIM).

**Índices de Productividad Laboral y Costo Unitario de la Mano de Obra en Establecimientos de las Industrias Manufactureras**

| Periodo | Índices anuales<br>(Base 2013=100) |                  |                  |                               |                                    |                        |   |                        |                                   |
|---------|------------------------------------|------------------|------------------|-------------------------------|------------------------------------|------------------------|---|------------------------|-----------------------------------|
|         | Volúmen de la producción           | Personal ocupado | Horas trabajadas | Remuneraciones reales totales | Productividad laboral con base en: |                        | Remuneraciones medias reales con base en: |                        | Costo unitario de la mano de obra |
|         |                                    |                  |                  |                               | Personal ocupado                   | Horas trabajadas       | Personal ocupado                          | Horas trabajadas       |                                   |
|         | (A)                                | (B)              | (C)              | (D)                           | $E = (A \div B) * 100$             | $F = (A \div C) * 100$ | $G = (D \div B) * 100$                    | $H = (D \div C) * 100$ | $I = (H \div F) * 100$            |
| 2005    | 87.6                               | 96.4             | 96.8             | 95.7                          | 90.9                               | 90.5                   | 99.3                                      | 98.9                   | 109.3                             |
| 2006    | 91.6                               | 100.4            | 100.2            | 100.0                         | 91.2                               | 91.4                   | 99.6                                      | 99.8                   | 109.2                             |
| 2007    | 93.2                               | 99.9             | 99.3             | 100.0                         | 93.3                               | 93.9                   | 100.1                                     | 100.7                  | 107.2                             |
| 2008    | 90.8                               | 98.6             | 98.2             | 99.5                          | 92.1                               | 92.5                   | 100.9                                     | 101.3                  | 109.5                             |
| 2009    | 81.3                               | 90.0             | 88.8             | 90.3                          | 90.3                               | 91.6                   | 100.3                                     | 101.7                  | 111.0                             |
| 2010    | 89.5                               | 93.2             | 93.4             | 92.8                          | 96.0                               | 95.8                   | 99.6                                      | 99.4                   | 103.8                             |
| 2011    | 94.0                               | 95.9             | 96.1             | 95.7                          | 98.0                               | 97.8                   | 99.8                                      | 99.6                   | 101.8                             |
| 2012    | 98.9                               | 98.1             | 98.6             | 98.0                          | 100.8                              | 100.3                  | 99.9                                      | 99.4                   | 99.1                              |
| 2013    | 100.0                              | 100.0            | 100.0            | 100.0                         | 100.0                              | 100.0                  | 100.0                                     | 100.0                  | 100.0                             |
| 2014    | 103.4                              | 102.8            | 102.5            | 103.2                         | 100.6                              | 100.9                  | 100.4                                     | 100.7                  | 99.8                              |
| 2015    | 104.7                              | 105.5            | 105.0            | 107.0                         | 99.2                               | 99.7                   | 101.4                                     | 101.9                  | 102.2                             |
| 2016    | 105.1                              | 108.6            | 108.5            | 112.6                         | 96.8                               | 96.9                   | 103.7                                     | 103.8                  | 107.1                             |
| 2017    | 107.0                              | 112.3            | 112.5            | 116.7                         | 95.3                               | 95.1                   | 103.9                                     | 103.7                  | 109.0                             |
| 2018    | 107.9                              | 115.3            | 115.4            | 121.1                         | 93.6                               | 93.5                   | 105.0                                     | 104.9                  | 112.2                             |
| 2019    | 107.2                              | 116.1            | 115.5            | 124.9                         | 92.3                               | 92.8                   | 107.6                                     | 108.1                  | 116.5                             |
| 2020    | 97.2                               | 112.6            | 105.9            | 122.1                         | 86.4                               | 91.8                   | 108.5                                     | 115.4                  | 125.7                             |
| 2021    | 107.5                              | 115.5            | 113.8            | 124.9                         | 93.1                               | 94.5                   | 108.2                                     | 109.8                  | 116.2                             |

Fuente: INEGI, Encuesta Mensual de la Industria Manufacturera (EMIM).

 [Gráfica anual de productividad laboral con base en personal ocupado](#)

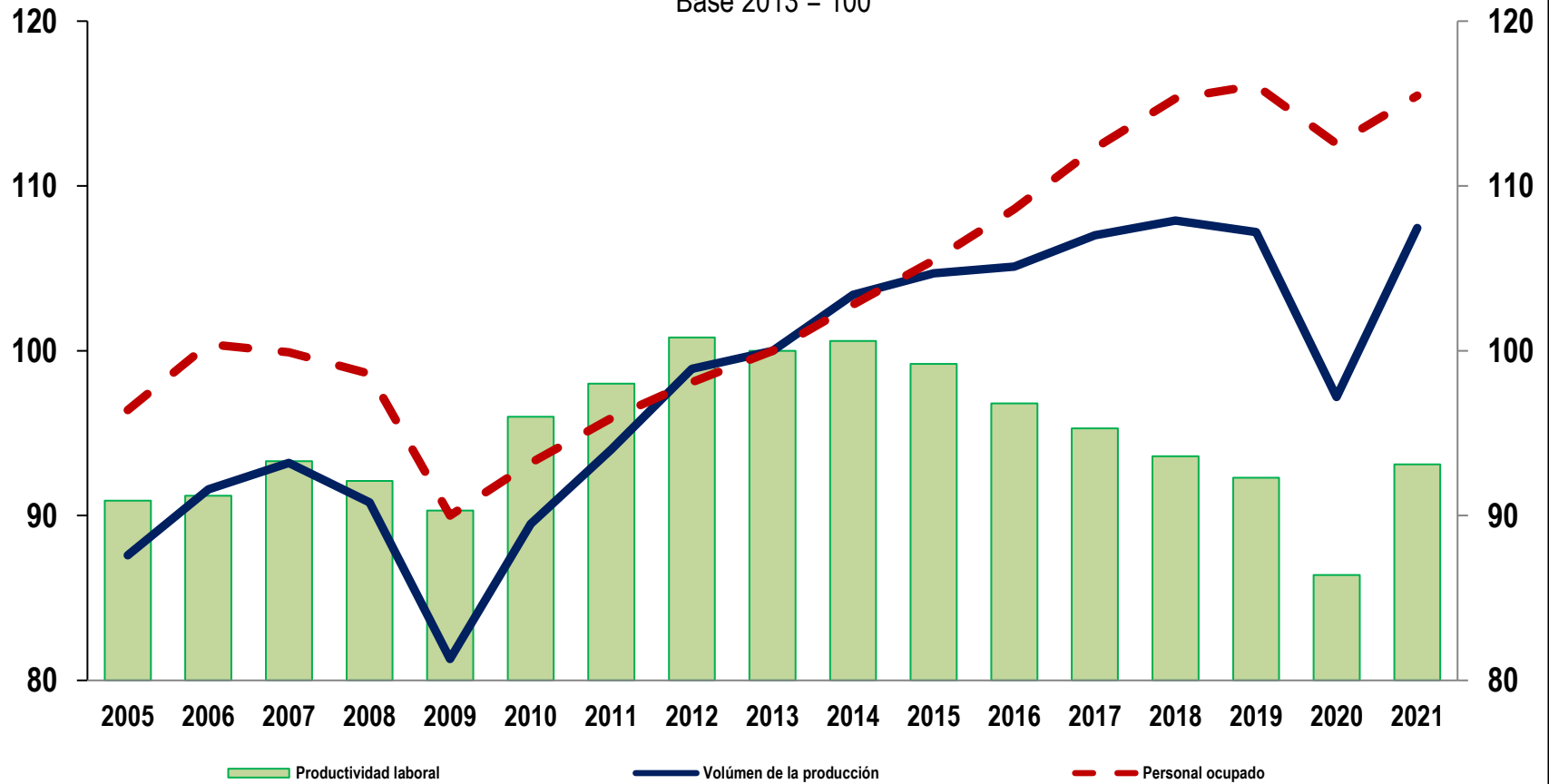
 [Gráfica anual de productividad laboral con base en horas trabajadas](#)

 [Gráfica anual de remuneraciones medias reales con base en personal ocupado](#)

 [Gráfica anual de remuneraciones medias reales con base en horas trabajadas](#)

 [Gráfica anual de costo unitario de la mano de obra](#)

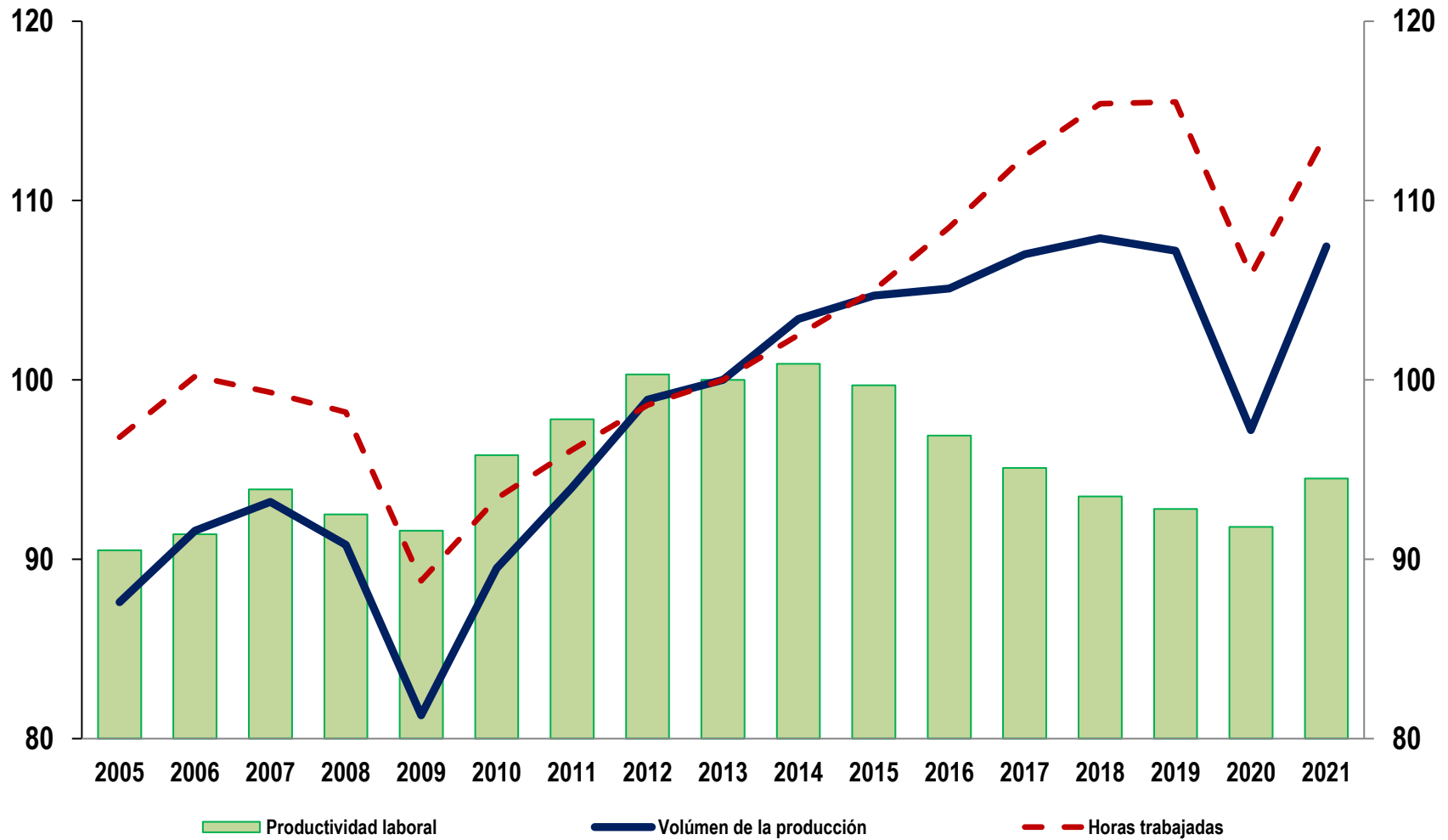
### Índice anual de productividad laboral de la industria manufacturera con base en el personal ocupado Base 2013 = 100



Fuente: INEGI, Encuesta Mensual de la Industria Manufacturera (EMIM).



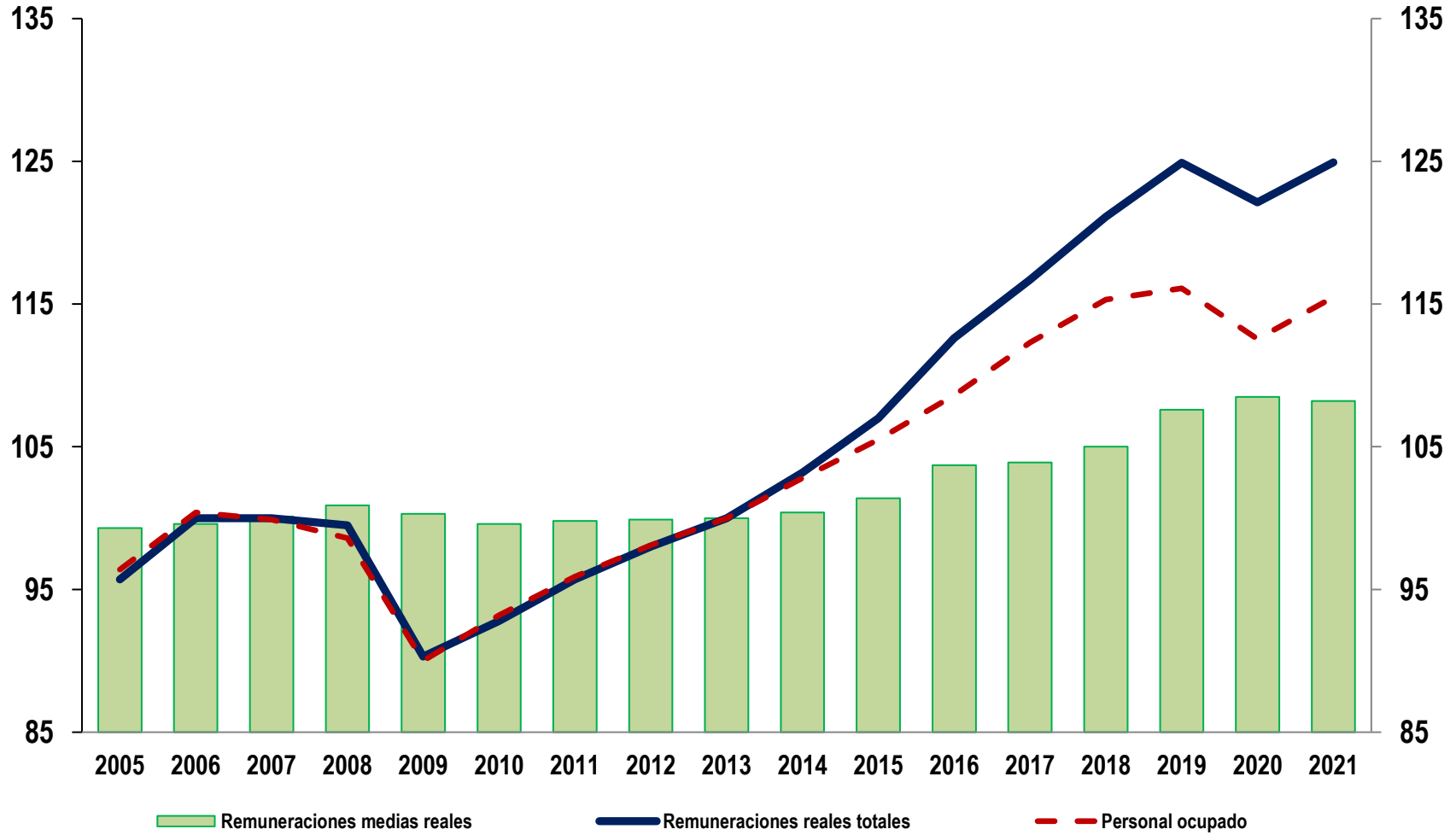
### Índice anual de productividad laboral de la industria manufacturera con base en horas trabajadas Base 2013 = 100



Fuente: INEGI, Encuesta Mensual de la Industria Manufacturera (EMIM).

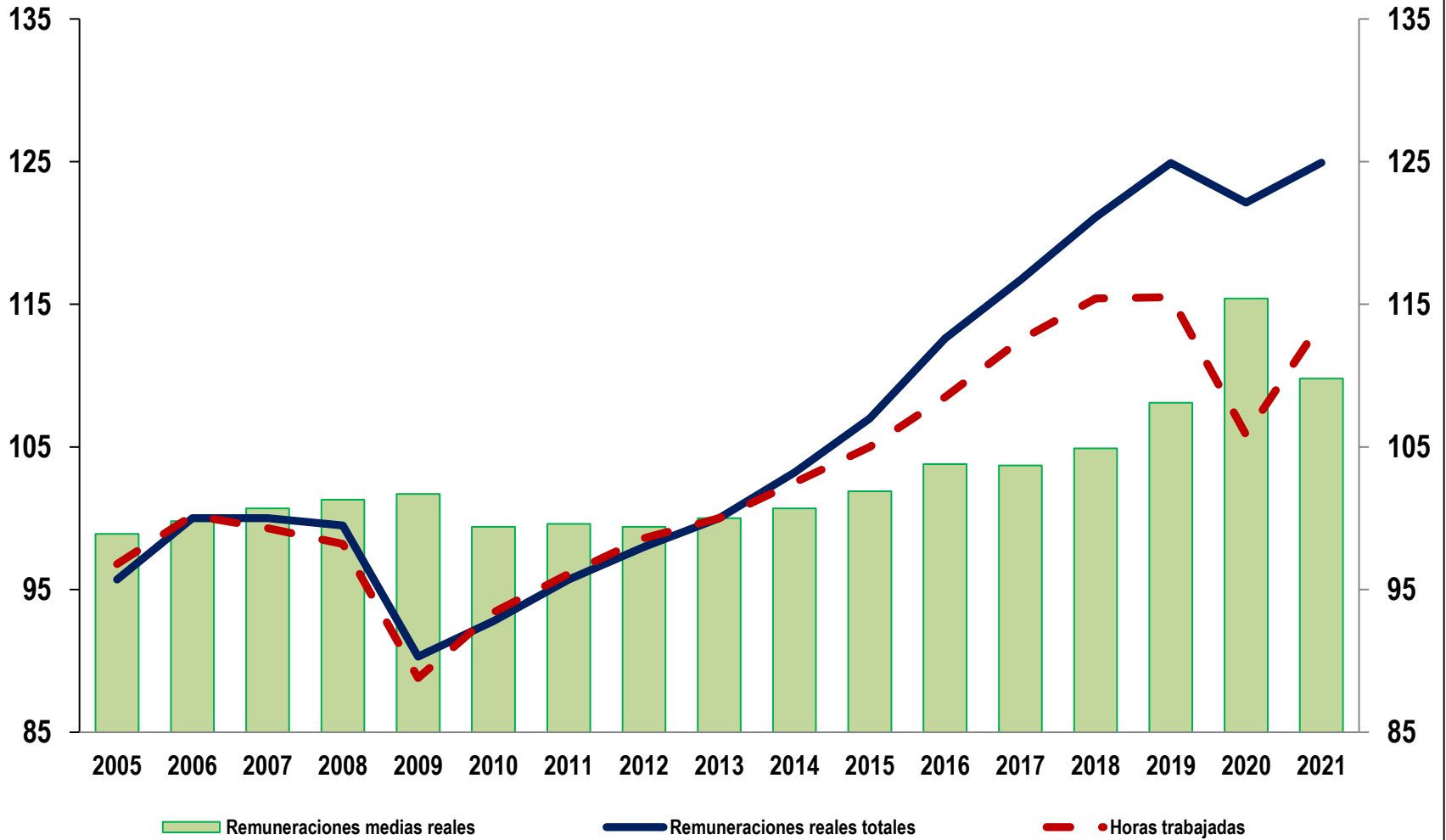
### Índice anual de las remuneraciones medias reales de la industria manufacturera con base en el personal ocupado

Base 2013 = 100



Fuente: INEGI, Encuesta Mensual de la Industria Manufacturera (EMIM).

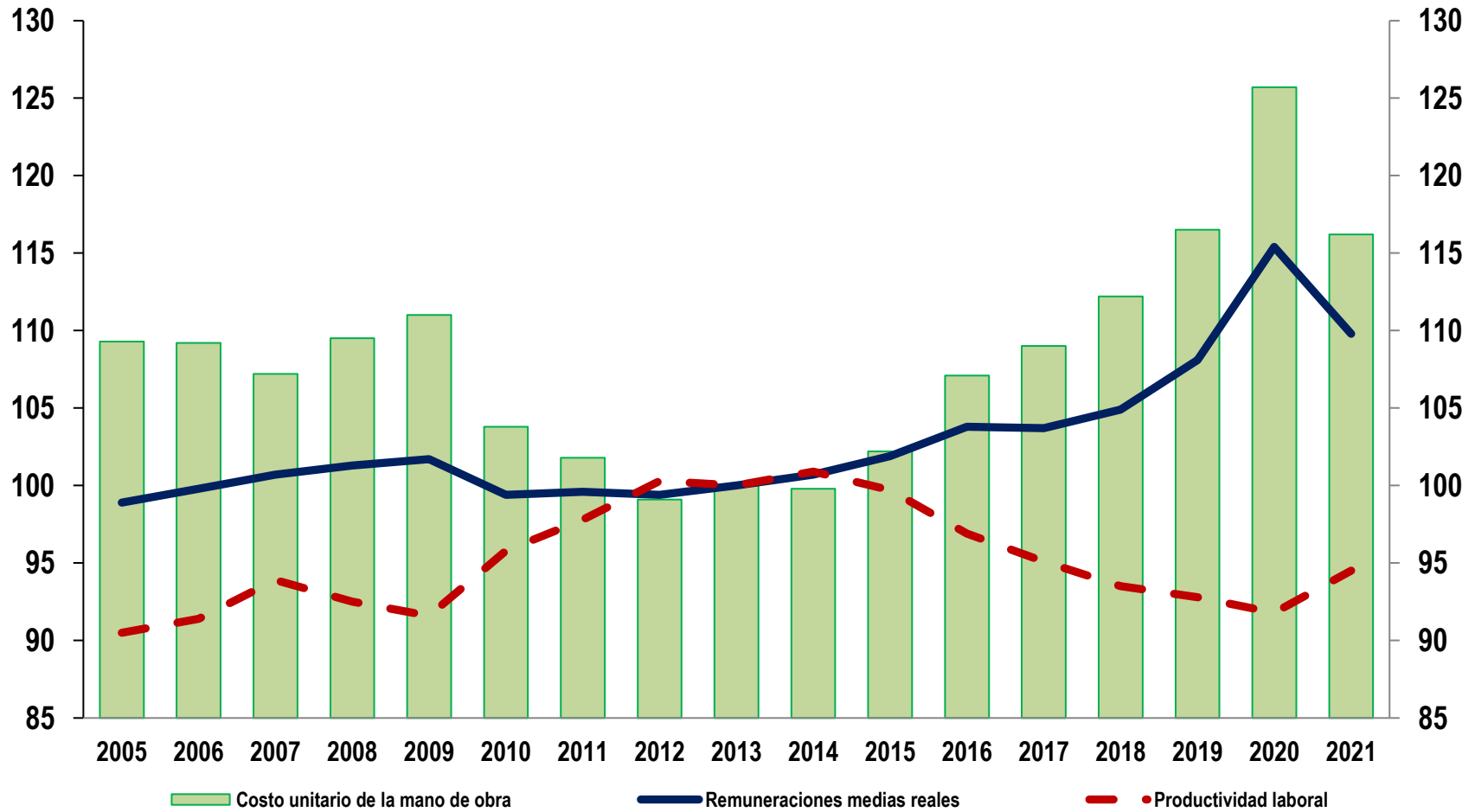
**Índice anual de las remuneraciones medias reales de la industria manufacturera  
con base en horas trabajadas**  
Base 2013 = 100



Fuente: INEGI, Encuesta Mensual de la Industria Manufacturera (EMIM).

### Índice anual del costo unitario de la mano de obra de la industria manufacturera con base en horas trabajadas

Base 2013 = 100



Fuente: INEGI, Encuesta Mensual de la Industria Manufacturera (EMIM).