

Índices de Productividad Laboral y Costo Unitario de la Mano de Obra en Empresas Constructoras







| Periodo | Índices trimestrales (Base 2013=100) | | | | | | | | | |
|---------|---|------------------|------------------|-------------------------------|------------------------------------|------------------|---|------------------|-----------------------------------|---------------|
| | Valor de la producción | Personal ocupado | Horas trabajadas | Remuneraciones reales totales | Productividad laboral con base en: | | Remuneraciones medias reales con base en: | | Costo unitario de la mano de obra | |
| | | | | | Personal ocupado | Horas trabajadas | Personal ocupado | Horas trabajadas | | |
| | | | | | E = (A÷B)*100 | F = (A÷C)*100 | G = (D÷B)*100 | H = (D÷C)*100 | | I = (H÷F)*100 |
| (A) | (B) | (C) | (D) | E = (A÷B)*100 | F = (A÷C)*100 | G = (D÷B)*100 | H = (D÷C)*100 | I = (H÷F)*100 | | |
| 2000 | I | 102.7 | 125.5 | ND | 79.9 | 81.8 | ND | 63.7 | ND | 77.9 |
| | II | 98.3 | 122.4 | ND | 82.8 | 80.3 | ND | 67.6 | ND | 84.2 |
| | III | 113.0 | 124.5 | ND | 82.8 | 90.8 | ND | 66.5 | ND | 73.2 |
| | IV | 103.6 | 116.8 | ND | 81.4 | 88.7 | ND | 69.7 | ND | 78.6 |
| 2001 | I | 94.3 | 114.5 | ND | 77.9 | 82.3 | ND | 68.0 | ND | 82.6 |
| | II | 92.5 | 113.0 | ND | 80.8 | 81.8 | ND | 71.5 | ND | 87.4 |
| | III | 94.7 | 111.8 | ND | 77.4 | 84.7 | ND | 69.3 | ND | 81.8 |
| | IV | 102.6 | 105.7 | ND | 77.5 | 97.1 | ND | 73.3 | ND | 75.5 |
| 2002 | I | 88.9 | 98.9 | ND | 72.9 | 89.9 | ND | 73.7 | ND | 82.0 |
| | II | 87.6 | 95.0 | ND | 78.2 | 92.2 | ND | 82.4 | ND | 89.4 |
| | III | 92.6 | 100.1 | ND | 77.9 | 92.5 | ND | 77.8 | ND | 84.1 |
| | IV | 96.6 | 97.0 | ND | 80.5 | 99.7 | ND | 83.1 | ND | 83.4 |
| 2003 | I | 89.5 | 91.8 | ND | 72.7 | 97.5 | ND | 79.1 | ND | 81.1 |
| | II | 86.0 | 93.3 | ND | 81.7 | 92.2 | ND | 87.6 | ND | 95.0 |
| | III | 91.8 | 98.3 | ND | 81.3 | 93.3 | ND | 82.7 | ND | 88.6 |
| | IV | 95.6 | 95.2 | ND | 83.5 | 100.4 | ND | 87.7 | ND | 87.4 |
| 2004 | I | 88.5 | 96.8 | ND | 79.2 | 91.4 | ND | 81.9 | ND | 89.6 |
| | II | 87.2 | 97.5 | ND | 85.9 | 89.5 | ND | 88.1 | ND | 98.4 |
| | III | 94.0 | 99.1 | ND | 85.0 | 94.8 | ND | 85.8 | ND | 90.5 |
| | IV | 99.3 | 94.8 | ND | 83.9 | 104.8 | ND | 88.5 | ND | 84.4 |
| 2005 | I | 91.0 | 99.0 | ND | 83.1 | 91.9 | ND | 83.9 | ND | 91.3 |
| | II | 91.3 | 101.0 | ND | 91.5 | 90.4 | ND | 90.7 | ND | 100.3 |
| | III | 96.7 | 104.0 | ND | 90.0 | 93.0 | ND | 86.6 | ND | 93.1 |
| | IV | 105.4 | 101.1 | ND | 91.0 | 104.3 | ND | 90.1 | ND | 86.4 |
| 2006 | I | 98.2 | 103.2 | 99.1 | 97.6 | 95.1 | 99.1 | 94.5 | 98.5 | 99.4 |
| | II | 98.7 | 105.8 | 102.4 | 108.7 | 93.3 | 96.4 | 102.8 | 106.1 | 110.1 |
| | III | 105.4 | 109.1 | 107.8 | 108.6 | 96.7 | 97.8 | 99.6 | 100.7 | 103.0 |
| | IV | 112.9 | 105.8 | 102.8 | 109.6 | 106.6 | 109.8 | 103.6 | 106.6 | 97.1 |
| 2007 | I | 102.8 | 106.2 | 100.9 | 101.4 | 96.7 | 101.8 | 95.4 | 100.4 | 98.6 |
| | II | 100.4 | 107.5 | 102.4 | 116.8 | 93.4 | 98.1 | 108.7 | 114.0 | 116.2 |
| | III | 106.9 | 110.4 | 106.2 | 114.7 | 96.8 | 100.7 | 103.9 | 108.0 | 107.2 |
| | IV | 115.2 | 108.2 | 102.3 | 114.0 | 106.5 | 112.6 | 105.3 | 111.4 | 98.9 |
| 2008 | I | 102.1 | 105.6 | 101.2 | 106.5 | 96.6 | 100.8 | 100.8 | 105.2 | 104.4 |
| | II | 103.2 | 107.8 | 102.6 | 125.6 | 95.7 | 100.5 | 116.5 | 122.3 | 121.7 |
| | III | 104.6 | 106.5 | 106.1 | 114.3 | 98.2 | 98.5 | 107.3 | 107.7 | 109.3 |
| | IV | 109.9 | 100.6 | 101.0 | 116.2 | 109.2 | 108.7 | 115.5 | 115.0 | 105.8 |
| 2009 | I | 95.2 | 98.5 | 97.2 | 120.0 | 96.6 | 97.9 | 121.9 | 123.5 | 126.1 |
| | II | 95.8 | 101.1 | 95.6 | 117.7 | 94.8 | 100.2 | 116.4 | 123.1 | 122.9 |
| | III | 97.5 | 98.9 | 98.0 | 110.5 | 98.6 | 99.5 | 111.8 | 112.8 | 113.4 |
| | IV | 102.4 | 93.7 | 95.8 | 112.9 | 109.3 | 106.9 | 120.5 | 117.9 | 110.3 |
| 2010 | I | 90.6 | 95.1 | 93.3 | 109.9 | 95.2 | 97.0 | 115.5 | 117.7 | 121.3 |
| | II | 93.6 | 97.8 | 93.0 | 113.4 | 95.6 | 100.7 | 115.9 | 122.0 | 121.2 |
| | III | 98.4 | 99.9 | 98.2 | 110.5 | 98.5 | 100.2 | 110.6 | 112.5 | 112.3 |
| | IV | 108.6 | 99.6 | 101.2 | 110.6 | 109.0 | 107.4 | 111.0 | 109.2 | 101.7 |
| 2011 | I | 92.3 | 97.4 | 96.7 | 101.9 | 94.8 | 95.4 | 104.7 | 105.4 | 110.5 |
| | II | 94.6 | 100.6 | 97.0 | 114.2 | 94.0 | 97.5 | 113.5 | 117.7 | 120.7 |
| | III | 101.5 | 104.3 | 102.5 | 117.6 | 97.3 | 99.0 | 112.7 | 114.7 | 115.9 |
| | IV | 112.3 | 104.1 | 103.7 | 122.0 | 107.8 | 108.3 | 117.1 | 117.7 | 108.7 |
| 2012 | I | 95.6 | 100.5 | 99.3 | 103.3 | 95.1 | 96.2 | 102.8 | 104.0 | 108.1 |
| | II | 102.9 | 103.7 | 99.6 | 114.4 | 99.2 | 103.3 | 110.3 | 114.8 | 111.1 |
| | III | 109.7 | 105.9 | 104.8 | 116.2 | 103.6 | 104.7 | 109.6 | 110.9 | 105.9 |
| | IV | 116.6 | 102.2 | 104.0 | 123.3 | 114.1 | 112.2 | 120.7 | 118.6 | 105.7 |
| 2013 | I | 93.6 | 98.7 | 99.2 | 93.7 | 94.8 | 94.3 | 94.9 | 94.5 | 100.2 |
| | II | 98.1 | 102.1 | 99.4 | 99.8 | 96.1 | 98.7 | 97.7 | 100.4 | 101.7 |
| | III | 100.0 | 99.6 | 100.8 | 98.5 | 100.4 | 99.2 | 98.9 | 97.7 | 98.5 |
| | IV | 108.3 | 99.5 | 100.6 | 107.9 | 108.8 | 107.7 | 108.4 | 107.3 | 99.6 |
| 2014 | I | 92.3 | 95.8 | 93.4 | 95.4 | 96.3 | 98.7 | 99.6 | 102.1 | 103.4 |
| | II | 95.2 | 97.4 | 93.6 | 102.1 | 97.6 | 101.7 | 104.7 | 109.0 | 107.2 |
| | III | 99.7 | 96.7 | 94.1 | 105.0 | 103.1 | 105.9 | 108.6 | 111.6 | 105.4 |
| | IV | 110.8 | 97.2 | 95.5 | 110.7 | 114.0 | 116.0 | 113.9 | 115.9 | 99.9 |
| 2015 | I | 93.9 | 93.5 | 90.4 | 95.3 | 100.4 | 103.9 | 101.9 | 105.4 | 101.4 |
| | II | 95.4 | 93.8 | 92.4 | 105.5 | 101.7 | 103.2 | 112.6 | 114.2 | 110.7 |
| | III | 102.8 | 93.1 | 91.9 | 103.3 | 110.4 | 111.8 | 111.0 | 112.4 | 100.5 |
| | IV | 106.3 | 92.1 | 91.1 | 106.7 | 115.4 | 116.7 | 115.8 | 117.1 | 100.3 |

Índices de Productividad Laboral y Costo Unitario de la Mano de Obra en Empresas Constructoras

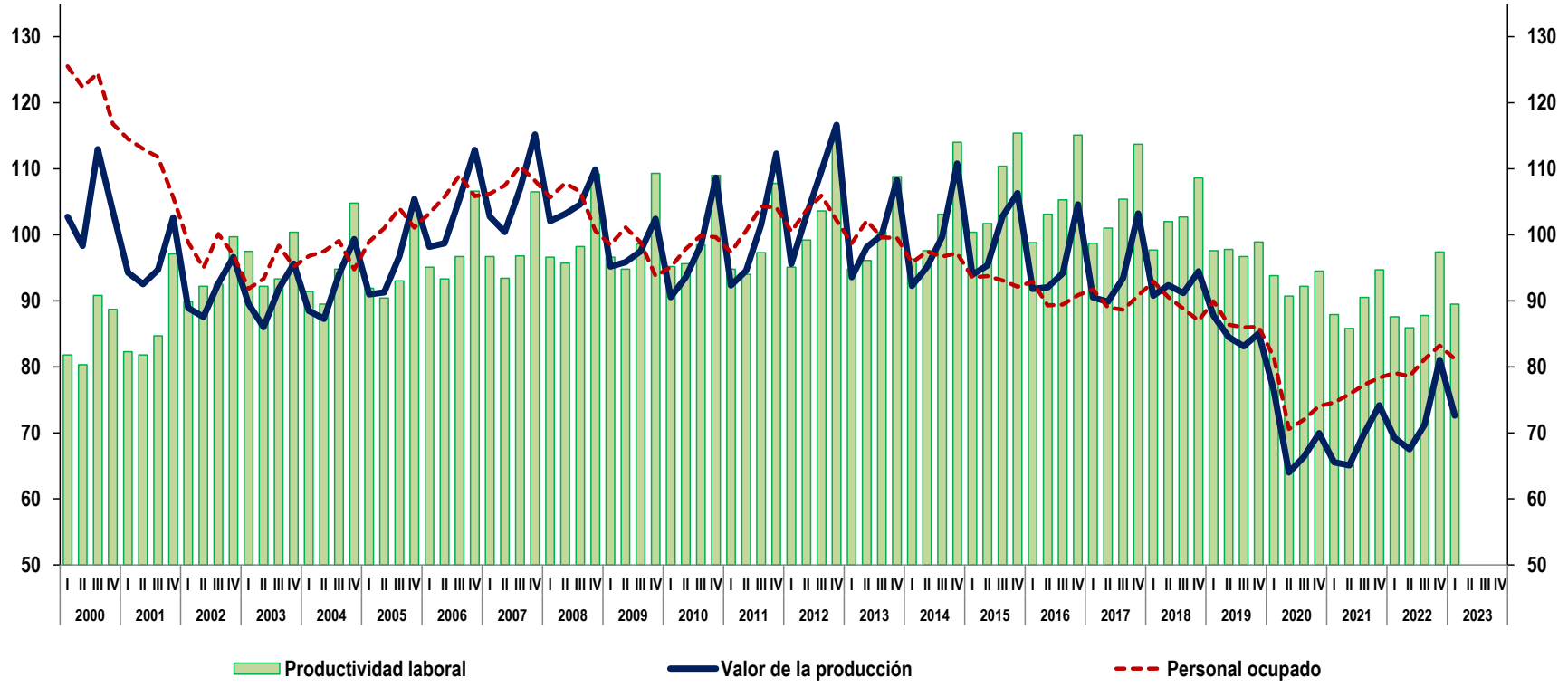
| Periodo | Índices trimestrales (Base 2013=100) | | | | | | | | | |
|---------|---|------------------|------------------|-------------------------------|------------------------------------|------------------------|---|------------------------|-----------------------------------|-------|
| | Valor de la producción | Personal ocupado | Horas trabajadas | Remuneraciones reales totales | Productividad laboral con base en: | | Remuneraciones medias reales con base en: | | Costo unitario de la mano de obra | |
| | | | | | Personal ocupado | Horas trabajadas | Personal ocupado | Horas trabajadas | | |
| | (A) | (B) | (C) | (D) | $E = (A \div B) * 100$ | $F = (A \div C) * 100$ | $G = (D \div B) * 100$ | $H = (D \div C) * 100$ | $I = (H \div F) * 100$ | |
| 2016 | I | 91.8 | 92.9 | 87.6 | 95.1 | 98.8 | 104.8 | 102.4 | 108.6 | 103.6 |
| | II | 92.0 | 89.3 | 87.4 | 104.3 | 103.1 | 105.2 | 116.8 | 119.3 | 113.4 |
| | III | 94.2 | 89.4 | 87.3 | 100.2 | 105.3 | 107.8 | 112.1 | 114.8 | 106.5 |
| | IV | 104.6 | 90.8 | 88.4 | 104.8 | 115.1 | 118.3 | 115.4 | 118.5 | 100.2 |
| 2017 | I | 90.5 | 91.7 | 87.7 | 91.8 | 98.7 | 103.2 | 100.1 | 104.7 | 101.5 |
| | II | 89.9 | 89.0 | 86.7 | 95.3 | 101.0 | 103.7 | 107.1 | 109.9 | 106.0 |
| | III | 93.4 | 88.6 | 88.2 | 94.8 | 105.4 | 105.9 | 106.9 | 107.4 | 101.4 |
| | IV | 103.2 | 90.8 | 87.6 | 104.6 | 113.7 | 117.8 | 115.2 | 119.4 | 101.4 |
| 2018 | I | 90.8 | 92.9 | 87.4 | 92.7 | 97.7 | 103.8 | 99.8 | 106.0 | 102.1 |
| | II | 92.4 | 90.5 | 87.1 | 100.8 | 102.0 | 106.0 | 111.4 | 115.7 | 109.2 |
| | III | 91.2 | 88.8 | 84.8 | 97.7 | 102.7 | 107.5 | 110.0 | 115.2 | 107.2 |
| | IV | 94.5 | 87.0 | 82.5 | 99.8 | 108.6 | 114.4 | 114.7 | 120.9 | 105.7 |
| 2019 | I | 87.8 | 89.9 | 85.1 | 88.8 | 97.6 | 103.1 | 98.8 | 104.4 | 101.3 |
| | II | 84.5 | 86.4 | 81.1 | 93.0 | 97.8 | 104.1 | 107.7 | 114.6 | 110.1 |
| | III | 83.1 | 86.0 | 82.3 | 91.5 | 96.7 | 101.0 | 106.4 | 111.2 | 110.1 |
| | IV | 85.0 | 86.0 | 81.4 | 93.2 | 98.9 | 104.5 | 108.3 | 114.5 | 109.6 |
| 2020 | I | 76.4 | 81.4 | 76.3 | 87.2 | 93.8 | 100.1 | 107.0 | 114.2 | 114.1 |
| | II | 64.0 | 70.6 | 64.1 | 80.4 | 90.7 | 99.8 | 113.9 | 125.4 | 125.7 |
| | III | 66.4 | 72.0 | 69.4 | 82.2 | 92.2 | 95.6 | 114.2 | 118.4 | 123.8 |
| | IV | 70.0 | 74.1 | 71.1 | 87.6 | 94.5 | 98.4 | 118.3 | 123.2 | 125.2 |
| 2021 | I | 65.6 | 74.6 | 70.3 | 86.6 | 87.9 | 93.2 | 116.0 | 123.1 | 132.1 |
| | II | 65.1 | 75.8 | 73.0 | 86.8 | 85.8 | 89.2 | 114.4 | 119.0 | 133.4 |
| | III | 70.0 | 77.3 | 76.3 | 83.0 | 90.5 | 91.7 | 107.4 | 108.8 | 118.6 |
| | IV | 74.2 | 78.4 | 75.8 | 84.6 | 94.7 | 97.9 | 107.9 | 111.6 | 114.0 |
| 2022 | I | 69.2 | 79.1 | 74.8 | 81.3 | 87.6 | 92.5 | 102.9 | 108.7 | 117.5 |
| | II | 67.5 | 78.6 | 75.1 | 80.7 | 85.9 | 89.9 | 102.7 | 107.5 | 119.6 |
| | III | 71.3 | 81.2 | 78.6 | 82.7 | 87.8 | 90.7 | 101.9 | 105.2 | 116.0 |
| | IV | 81.0 | 83.2 | 79.9 | 91.6 | 97.4 | 101.5 | 110.1 | 114.7 | 113.0 |
| 2023 | I | 72.6 | 81.2 | 77.5 | 84.1 | 89.5 | 93.6 | 103.6 | 108.5 | 115.9 |
| | II | | | | | | | | | |
| | III | | | | | | | | | |
| | IV | | | | | | | | | |

Nota: Cifras preliminares a partir de 2022-I.

Fuente: INEGI, Encuesta Nacional de Empresas Constructoras (ENEC).

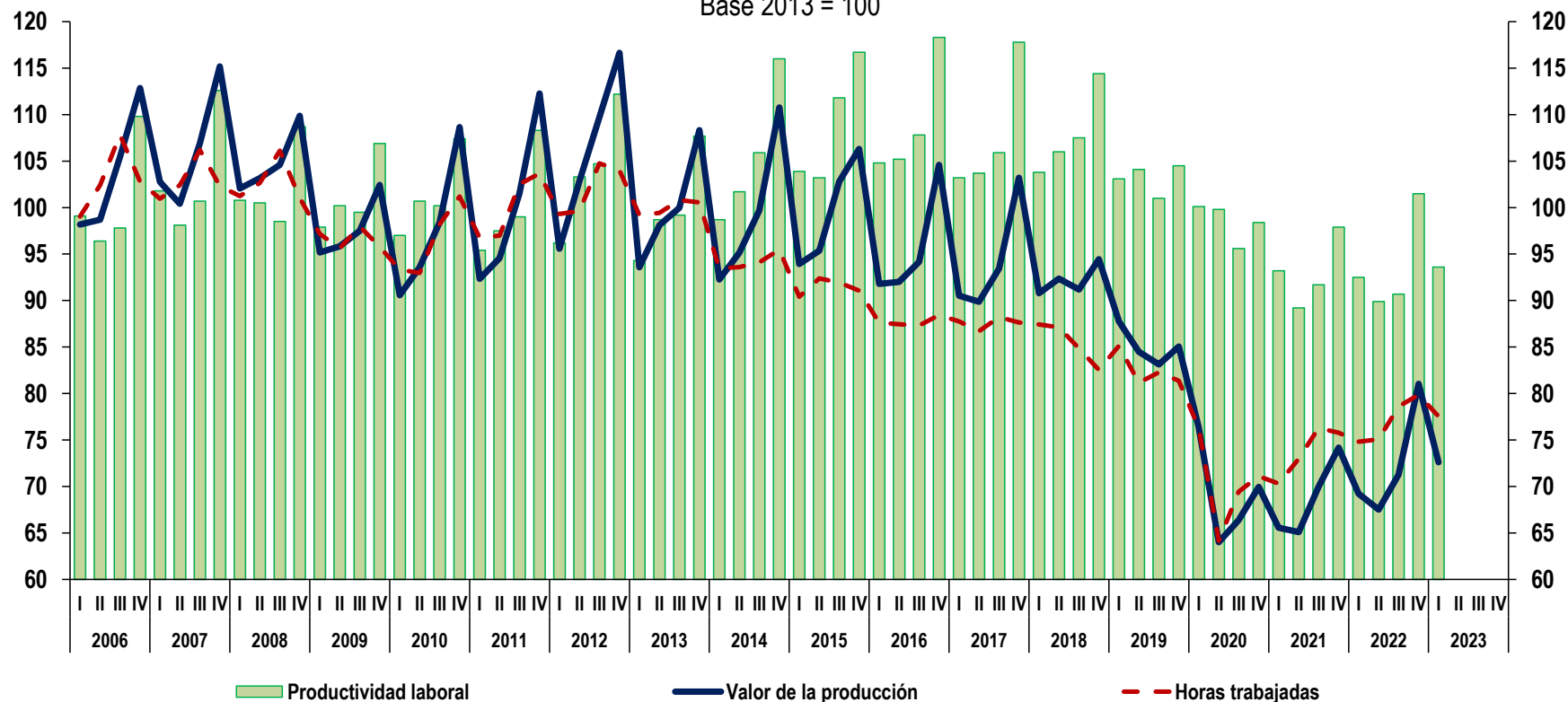
-  [Gráfica trimestral de productividad laboral con base en personal ocupado](#)
-  [Gráfica trimestral de productividad laboral con base en horas trabajadas](#)
-  [Gráfica trimestral de remuneraciones medias reales con base en personal ocupado](#)
-  [Gráfica trimestral de remuneraciones medias reales con base en horas trabajadas](#)
-  [Gráfica trimestral de costo unitario de la mano de obra 2000 en adelante](#)
-  [Gráfica trimestral de costo unitario de la mano de obra con base en las horas trabajadas de 2006 en adelante](#)

**Índice trimestral de productividad laboral en las empresas constructoras
con base en el personal ocupado**
Base 2013 = 100



Nota: Cifras preliminares a partir de 2022-I.
Fuente: INEGI, Encuesta Nacional de Empresas Constructoras (ENEC).

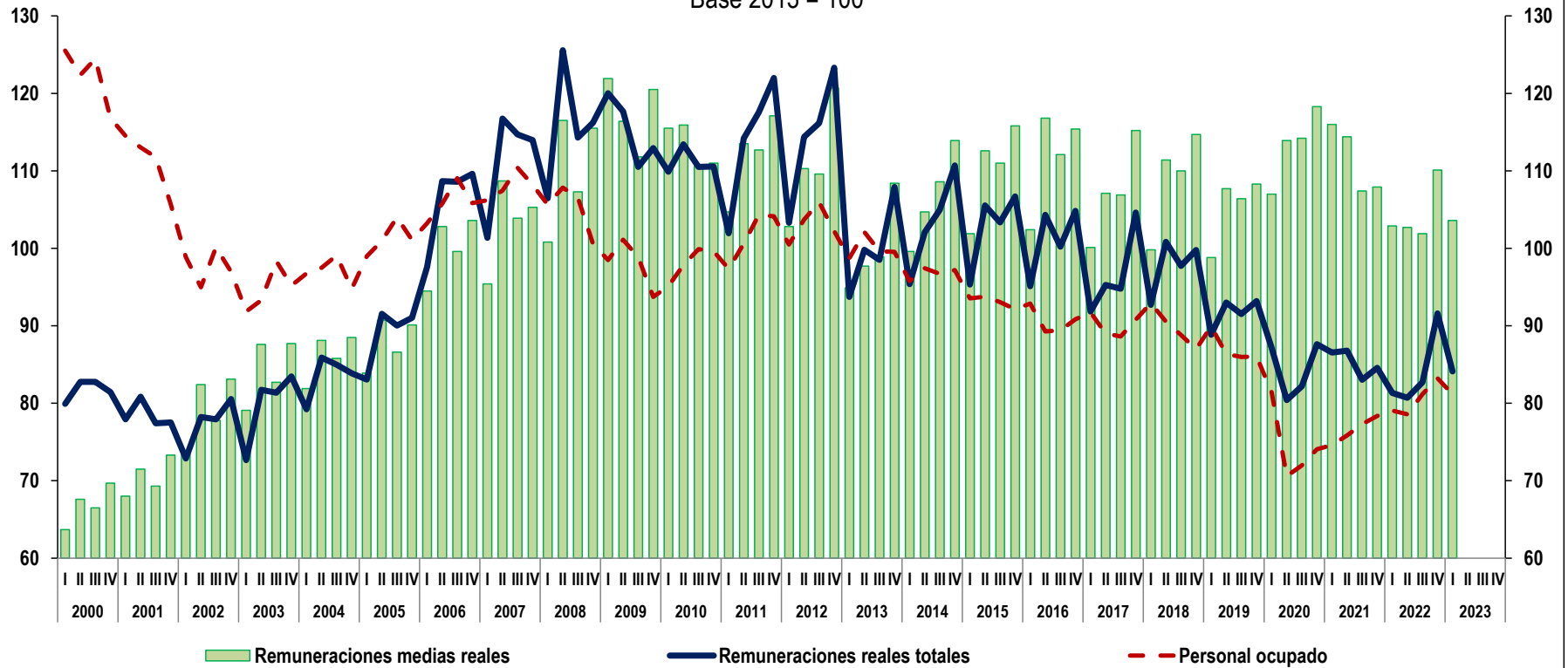
**Índice trimestral de productividad laboral en las empresas constructoras
con base en horas trabajadas**
Base 2013 = 100



Nota: Cifras preliminares a partir de 2022-I.

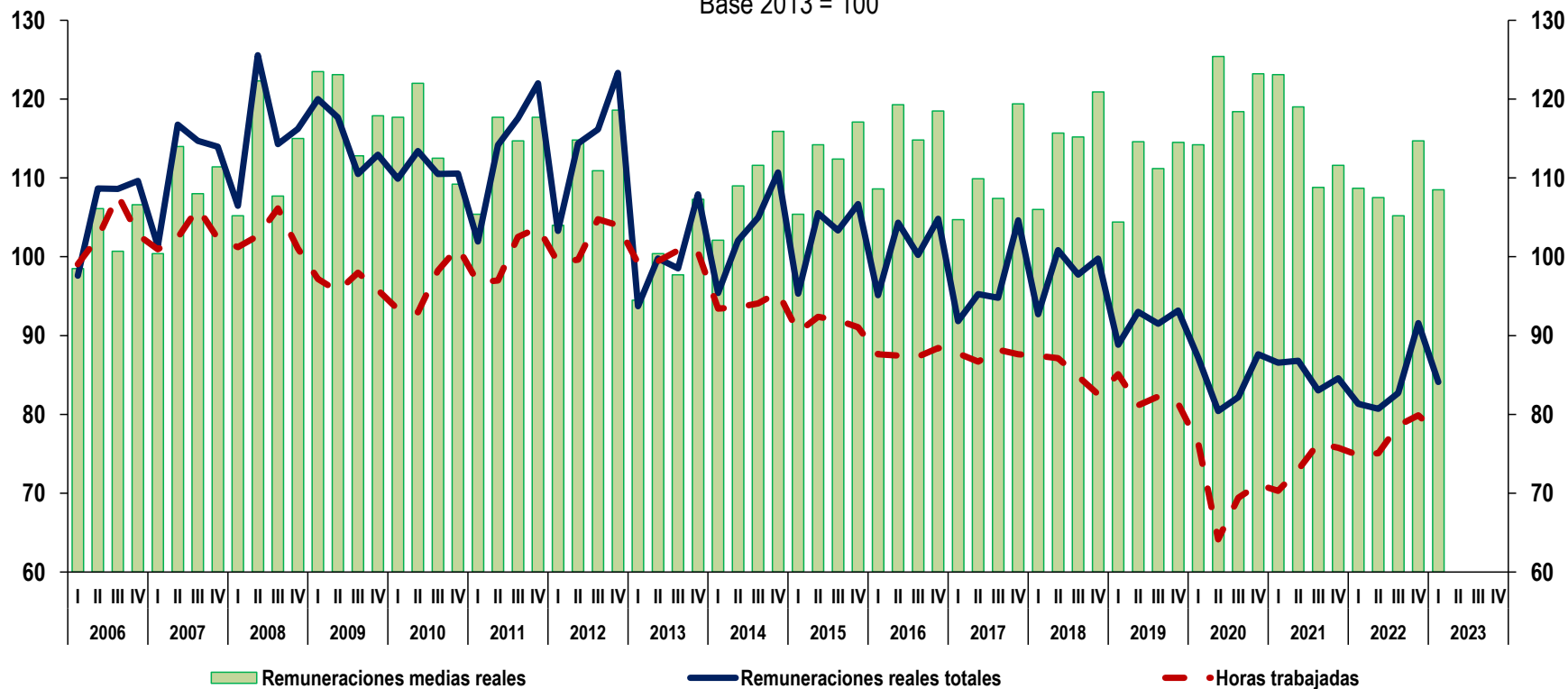
Fuente: INEGI, Encuesta Nacional de Empresas Constructoras (ENEC).

**Índice trimestral de las remuneraciones medias reales en las empresas constructoras
con base en el personal ocupado**
Base 2013 = 100



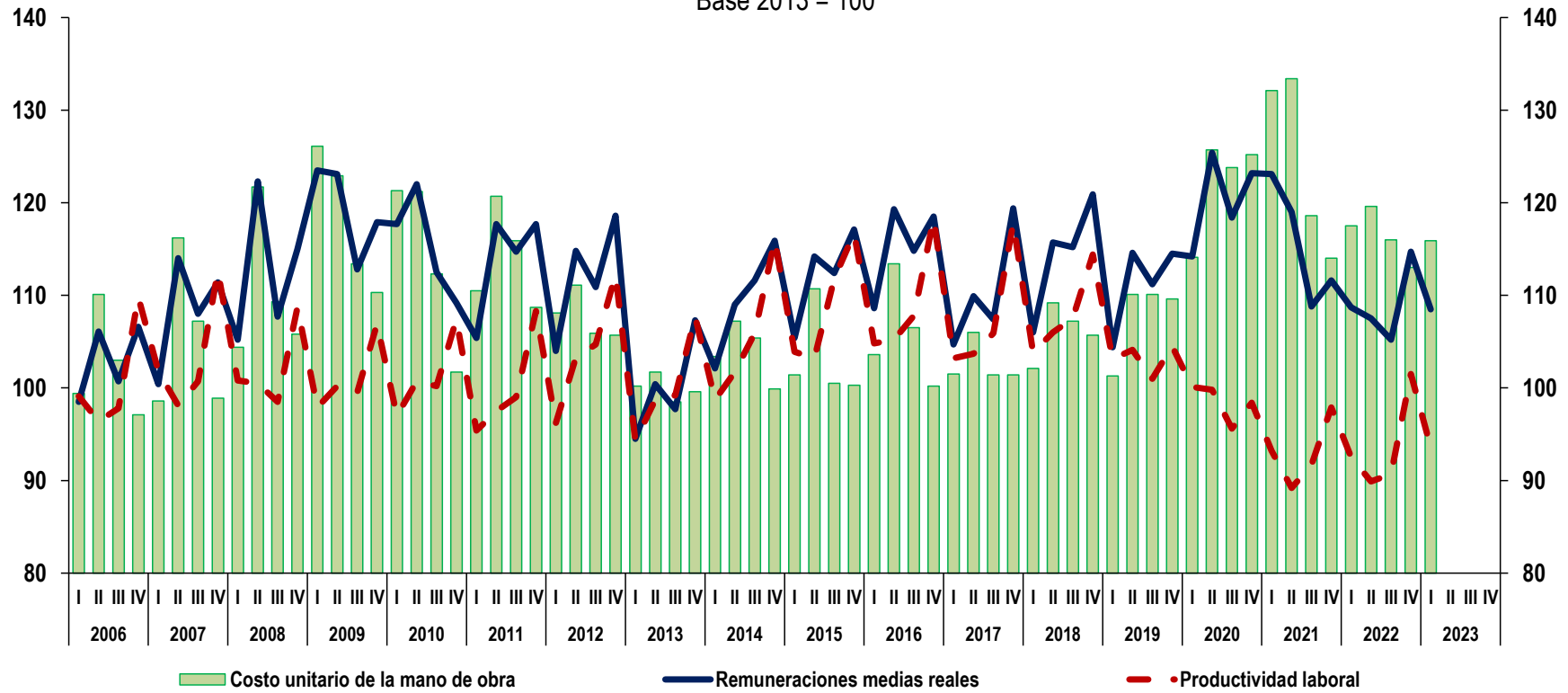
Nota: Cifras preliminares a partir de 2022-I.
Fuente: INEGI, Encuesta Nacional de Empresas Constructoras (ENEC).

**Índice trimestral de las remuneraciones medias reales en las empresas constructoras
con base en horas trabajadas**
Base 2013 = 100



Nota: Cifras preliminares a partir de 2022-I.
Fuente: INEGI, Encuesta Nacional de Empresas Constructoras (ENEC).

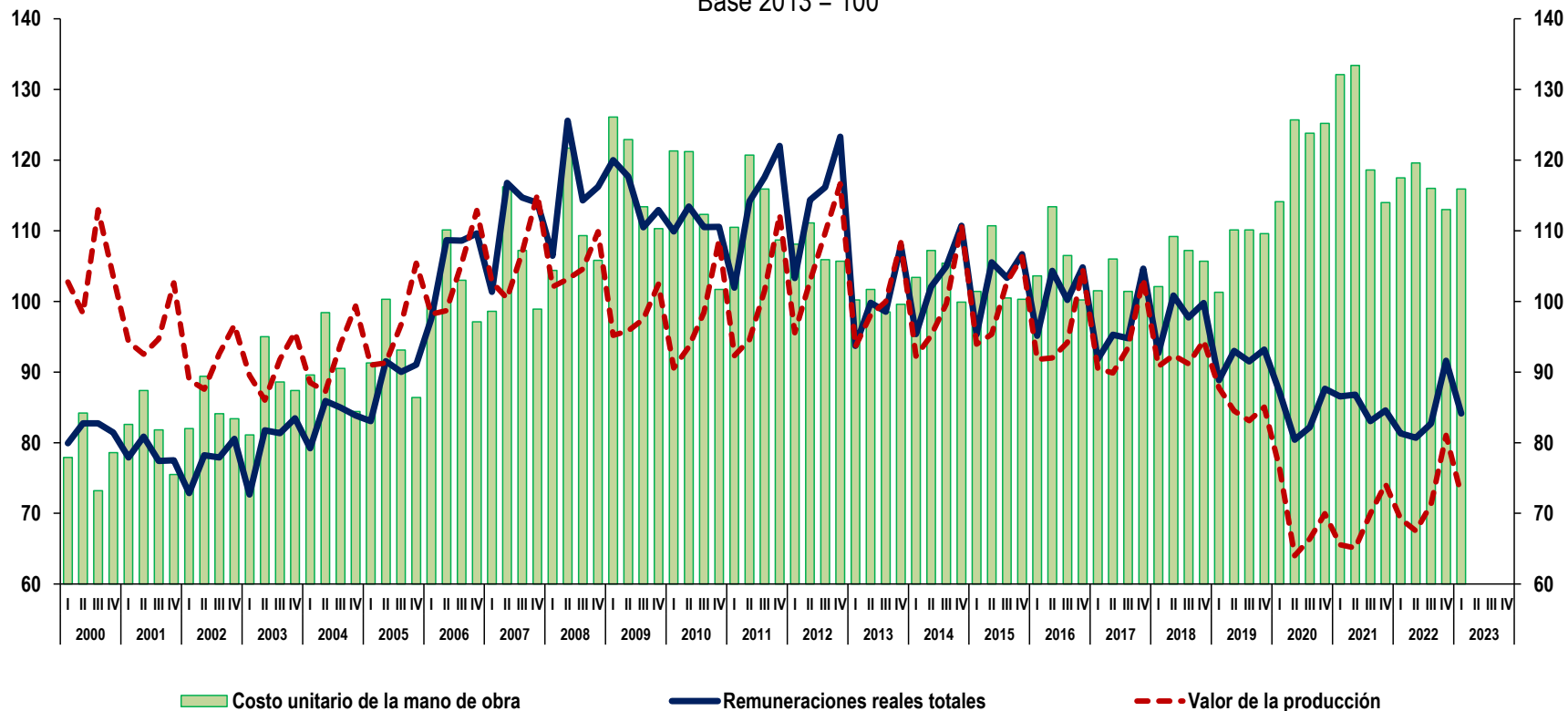
**Índice trimestral del costo unitario de la mano de obra en las empresas constructoras
con base en las horas trabajadas**
Base 2013 = 100



Nota: Cifras preliminares a partir de 2022-I.
Fuente: INEGI, Encuesta Nacional de Empresas Constructoras (ENEC).

Índice trimestral del costo unitario de la mano de obra en las empresas constructoras con base las remuneraciones totales y valor de la producción

Base 2013 = 100



Nota: Cifras preliminares a partir de 2022-I.

Fuente: INEGI, Encuesta Nacional de Empresas Constructoras (ENEC).

Índices de Productividad Laboral y Costo Unitario de la Mano de Obra en Empresas Constructoras

| Periodo | Índices anuales (Base 2013=100) | | | | | | | | |
|---------|------------------------------------|------------------|------------------|-------------------------------|------------------------------------|------------------------|---|------------------------|-----------------------------------|
| | Valor de la producción | Personal ocupado | Horas trabajadas | Remuneraciones reales totales | Productividad laboral con base en: | | Remuneraciones medias reales con base en: | | Costo unitario de la mano de obra |
| | | | | | Personal ocupado | Horas trabajadas | Personal ocupado | Horas trabajadas | |
| | (A) | (B) | (C) | (D) | $E = (A \div B) * 100$ | $F = (A \div C) * 100$ | $G = (D \div B) * 100$ | $H = (D \div C) * 100$ | $I = (H \div F) * 100$ |
| 2000 | 104.4 | 122.3 | ND | 81.7 | 85.4 | ND | 66.8 | ND | 78.2 |
| 2001 | 96.0 | 111.2 | ND | 78.4 | 86.3 | ND | 70.5 | ND | 81.7 |
| 2002 | 91.4 | 97.7 | ND | 77.4 | 93.6 | ND | 79.2 | ND | 84.6 |
| 2003 | 90.7 | 94.7 | ND | 79.8 | 95.8 | ND | 84.3 | ND | 88.0 |
| 2004 | 92.3 | 97.0 | ND | 83.5 | 95.1 | ND | 86.0 | ND | 90.4 |
| 2005 | 96.1 | 101.2 | ND | 88.9 | 94.9 | ND | 87.8 | ND | 92.5 |
| 2006 | 103.8 | 106.0 | 103.0 | 106.1 | 98.0 | 100.8 | 100.1 | 103.0 | 102.2 |
| 2007 | 106.3 | 108.1 | 103.0 | 111.7 | 98.4 | 103.3 | 103.4 | 108.5 | 105.0 |
| 2008 | 104.9 | 105.2 | 102.8 | 115.6 | 99.8 | 102.1 | 110.0 | 112.5 | 110.2 |
| 2009 | 97.7 | 98.0 | 96.6 | 115.3 | 99.7 | 101.1 | 117.6 | 119.3 | 118.0 |
| 2010 | 97.8 | 98.1 | 96.4 | 111.1 | 99.7 | 101.4 | 113.2 | 115.2 | 113.6 |
| 2011 | 100.2 | 101.6 | 100.0 | 113.9 | 98.6 | 100.2 | 112.1 | 113.9 | 113.7 |
| 2012 | 106.2 | 103.1 | 101.9 | 114.3 | 103.0 | 104.2 | 110.9 | 112.1 | 107.6 |
| 2013 | 100.0 | 100.0 | 100.0 | 100.0 | 100.0 | 100.0 | 100.0 | 100.0 | 100.0 |
| 2014 | 99.5 | 96.8 | 94.2 | 103.3 | 102.8 | 105.6 | 106.7 | 109.7 | 103.9 |
| 2015 | 99.6 | 93.1 | 91.5 | 102.7 | 107.0 | 108.9 | 110.3 | 112.3 | 103.1 |
| 2016 | 95.6 | 90.6 | 87.7 | 101.1 | 105.6 | 109.1 | 111.6 | 115.3 | 105.7 |
| 2017 | 94.3 | 90.0 | 87.6 | 96.6 | 104.7 | 107.6 | 107.3 | 110.3 | 102.5 |
| 2018 | 92.2 | 89.8 | 85.5 | 97.8 | 102.7 | 107.9 | 108.8 | 114.4 | 106.0 |
| 2019 | 85.1 | 87.1 | 82.5 | 91.6 | 97.7 | 103.2 | 105.2 | 111.1 | 107.7 |
| 2020 | 69.2 | 74.5 | 70.2 | 84.3 | 92.8 | 98.5 | 113.2 | 120.1 | 121.9 |
| 2021 | 68.7 | 76.5 | 73.8 | 85.2 | 89.8 | 93.0 | 111.4 | 115.4 | 124.1 |
| 2022 | 72.3 | 80.5 | 77.1 | 84.1 | 89.8 | 93.7 | 104.4 | 109.1 | 116.4 |

Nota: Cifras preliminares a partir de 2022

Fuente: INEGI, Encuesta Nacional de Empresas Constructoras (ENEC).

 [Gráfica anual de productividad laboral con base en personal ocupado](#)

 [Gráfica anual de productividad laboral con base en horas trabajadas](#)

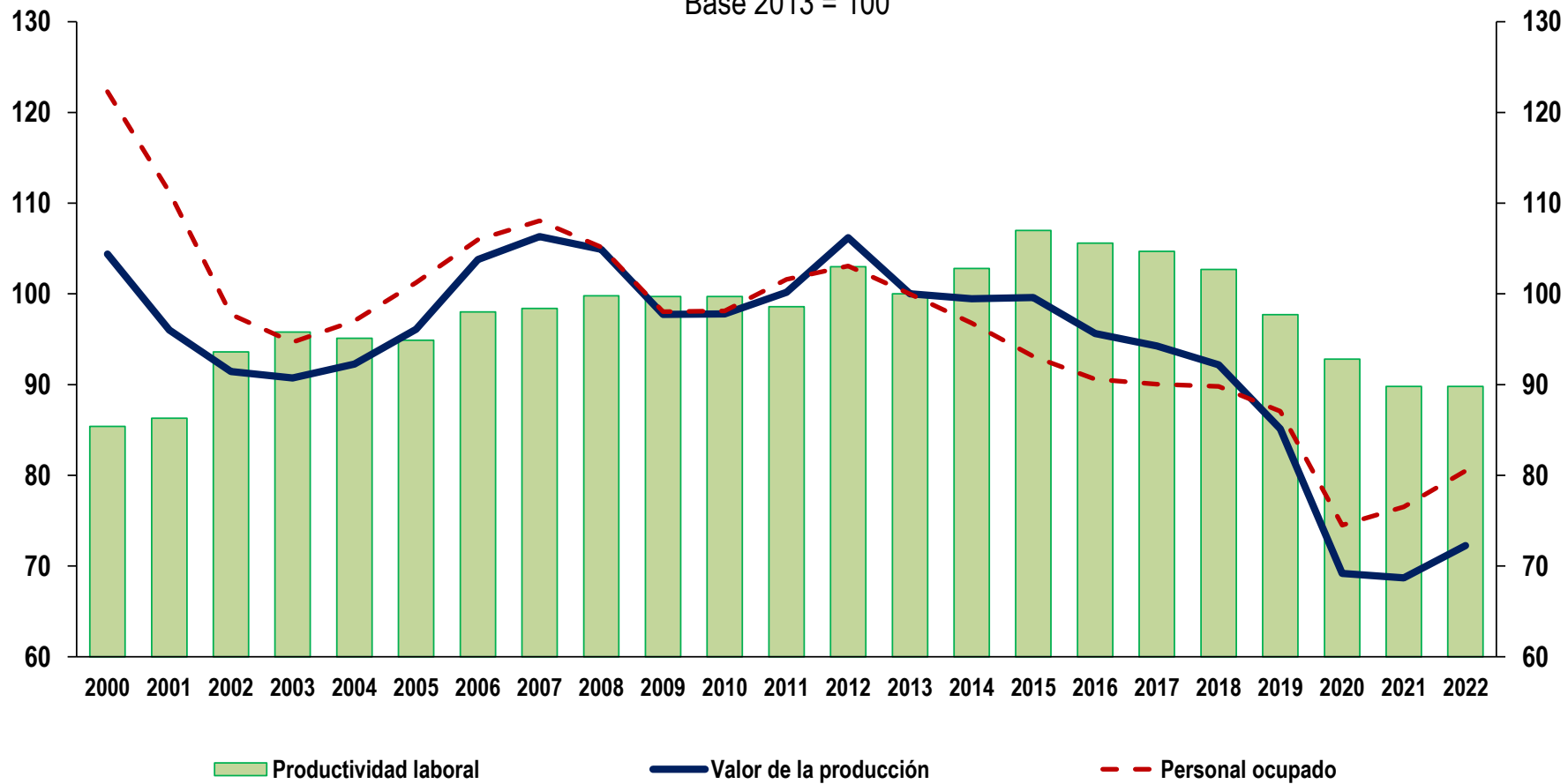
 [Gráfica anual de remuneraciones medias reales con base en personal ocupado](#)

 [Gráfica anual de remuneraciones medias reales con base en horas trabajadas](#)

 [Gráfica anual de costo unitario de la mano de obra con base en las horas trabajadas de 2006 en adelante.](#)

 [Gráfica anual de costo unitario de la mano de obra de 2000 en adelante.](#)

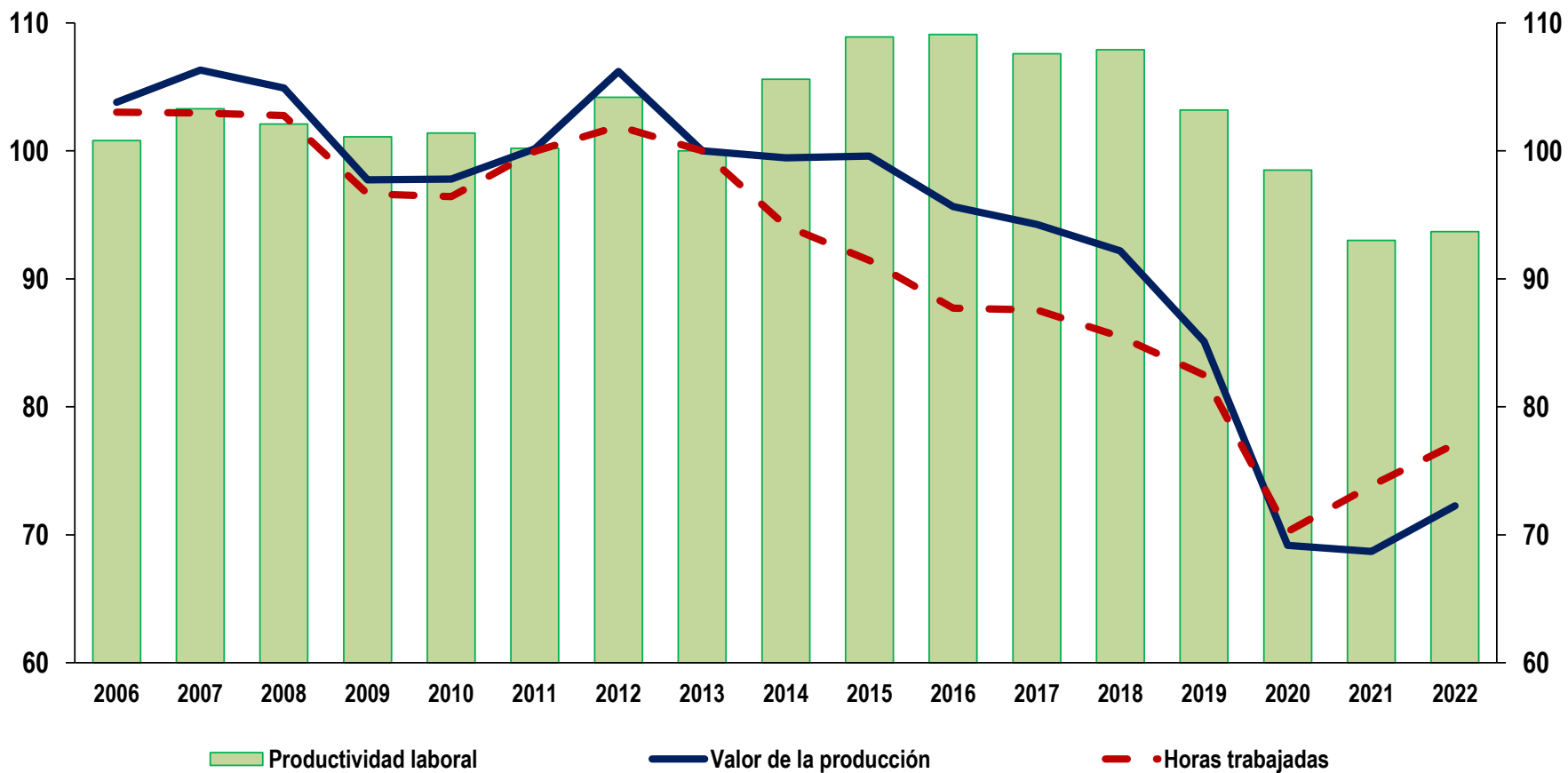
Índice anual de productividad laboral en las empresas constructoras con base en el personal ocupado Base 2013 = 100



Nota: Cifras preliminares a partir de 2022.

Fuente: INEGI, Encuesta Nacional de Empresas Constructoras (ENEC).

**Índice anual de productividad laboral en las empresas constructoras
con base en horas trabajadas**
Base 2013 = 100

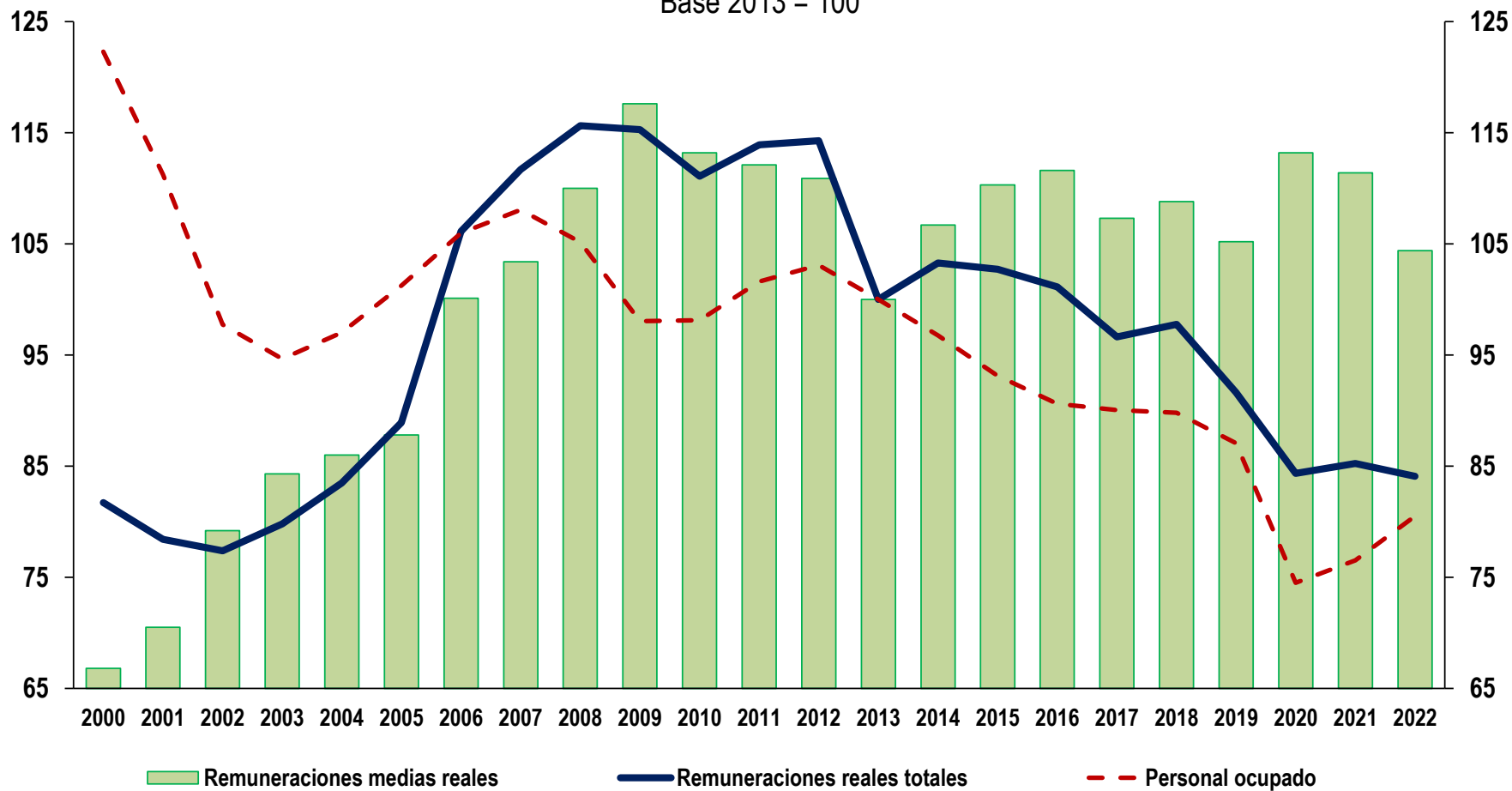


Nota: Cifras preliminares a partir de 2022.

Fuente: INEGI, Encuesta Nacional de Empresas Constructoras (ENEC).

Índice anual de las remuneraciones medias reales en las empresas constructoras con base en el personal ocupado

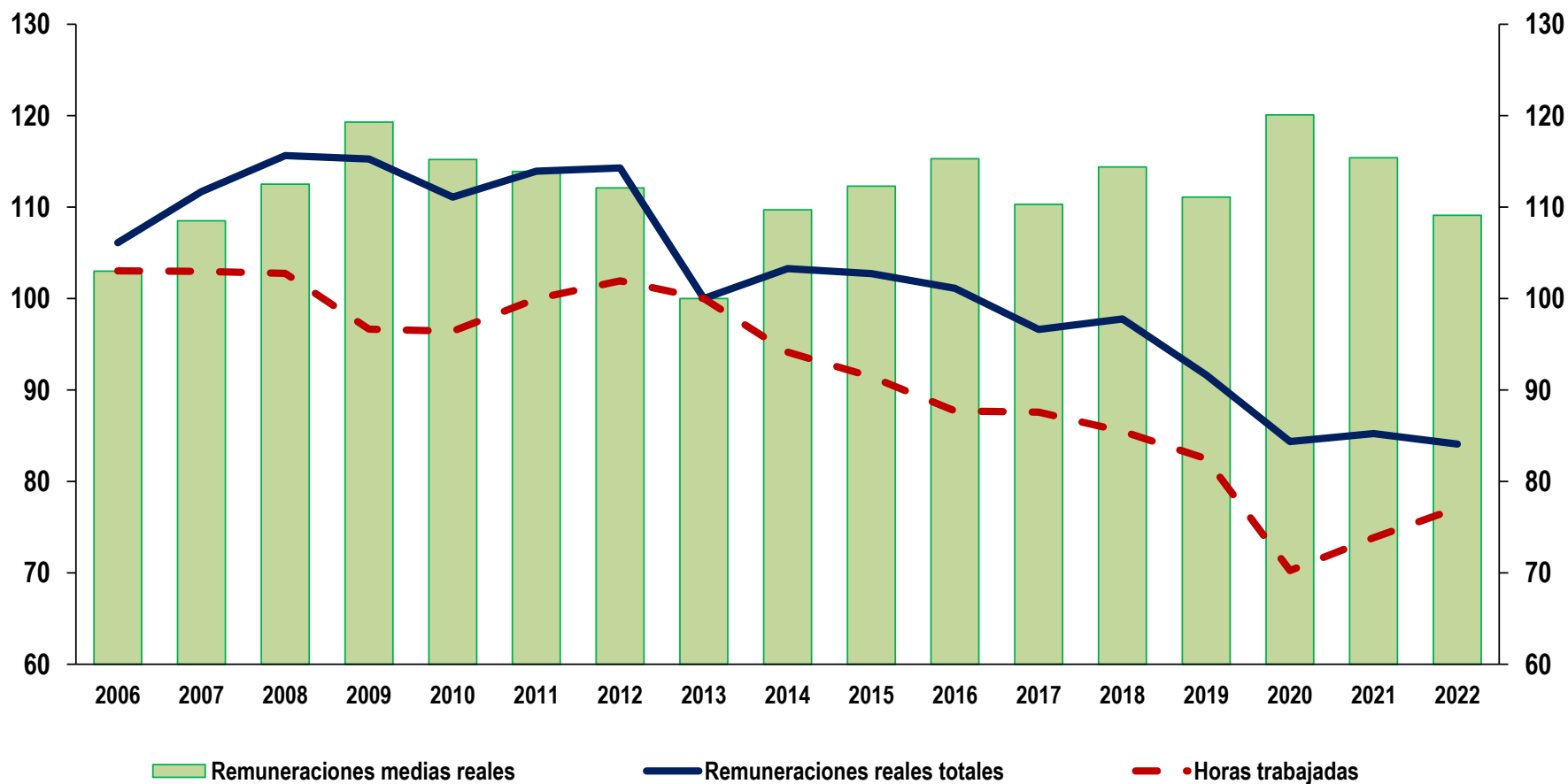
Base 2013 = 100



Nota: Cifras preliminares a partir de 2022.

Fuente: INEGI, Encuesta Nacional de Empresas Constructoras (ENEC).

**Índice anual de las remuneraciones medias reales en las empresas constructoras
con base en horas trabajadas**
Base 2013 = 100

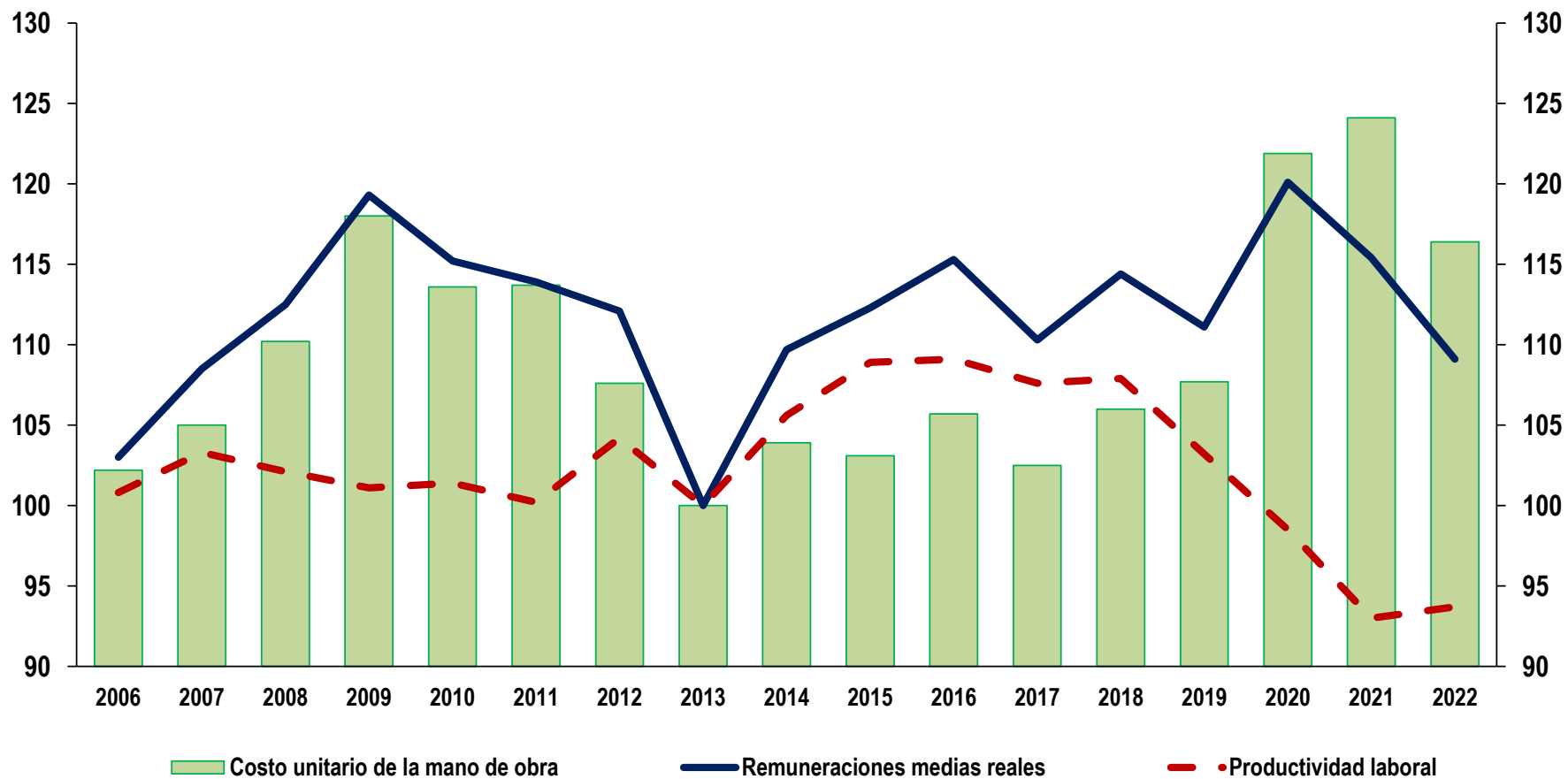


Nota: Cifras preliminares a partir de 2022.

Fuente: INEGI, Encuesta Nacional de Empresas Constructoras (ENEC).

Índice anual del costo unitario de la mano de obra en las empresas constructoras con base en las remuneraciones medias reales y productividad laboral.

Base 2013 = 100



Nota: Cifras preliminares a partir de 2022.

Fuente: INEGI, Encuesta Nacional de Empresas Constructoras (ENEC).